

INSTALLATION GUIDE



Cat-Back Exhaust Kit

2003 - 2007 Ford 6.0L Powerstroke

(Install Time: 3 hours)





DISCLAIMER

1) By installing this product onto your vehicle, you assume all risk and liability associated with its use.

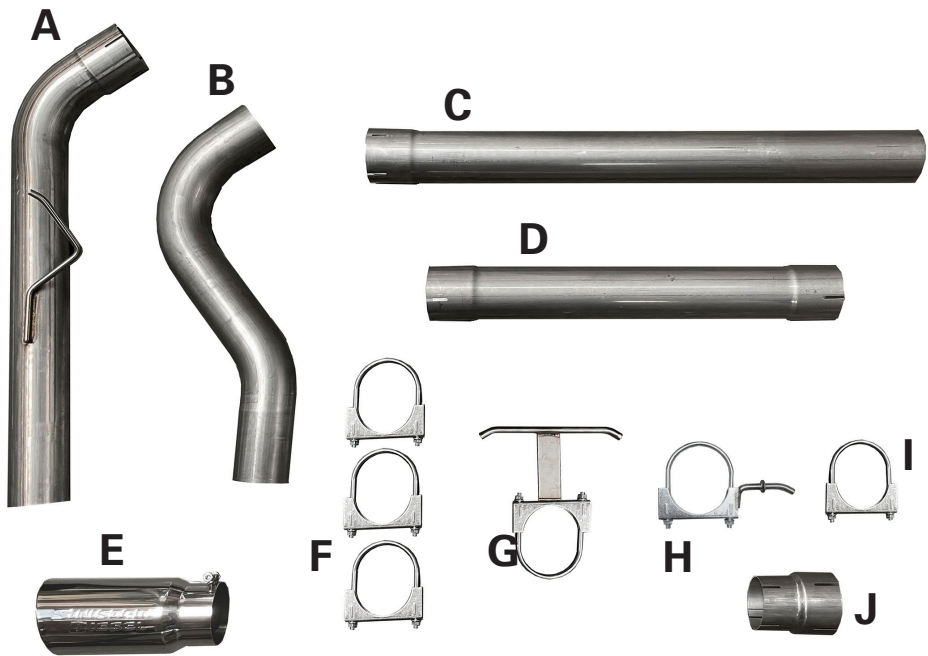
2) It is your responsibility to make sure your vehicle complies with all federal, state, and local emissions laws. Federal and many state and local laws prohibit the removal, modification or rendering inoperative of any part of the design affecting emissions or safety on motor vehicles used on a public street or highway. Violation may result in a fine of up to \$32,500 per vehicle (or possibly higher depending on changes in the law). All civil penalties and fines for removing your vehicle's emissions equipment are the sole responsibility of the end user.

3) Due to its high performance nature, this product may void vehicle manufacturer's warranty.

4) Sinister Mfg Company, Inc. is not responsible for misuse of its products. By installing this product, you release Sinister Mfg Company, Inc. of any and all liability associated with its use.

5) Depending on where you live, restrictions may apply. Check all applicable laws before installing or using!

6) The purchaser and end user releases, indemnifies, discharges and holds harmless Sinister Mfg Company, Inc. from any and all claims, damages, causes of action, injuries, or expenses resulting from or relating to the use or installation of this product that is in violation of the terms and conditions on this page, the product disclaimer, and/or the product installation instructions. Sinister Mfg Company, Inc. will not be liable for any direct, indirect, consequential, punitive, statutory, or incidental damages or fines caused by the use or installation of this product.



PART:	DESCRIPTION:	QTY:
A	Tailpipe piece	1
B	Over-Axle piece	1
C	Extension piece	1
D	Muffler Delete section	1
E	Exhaust Tip	1
F	4" Clamps	2
G	4" Clamp w/ "T" Hanger	1
H	4" Clamp w/ Long Hanger	1
I	3.5" Clamp	1
J	3.5" to 4" Coupler	1

IMPORTANT: READ ALL INSTRUCTIONS PRIOR TO INSTALL. Prior to installation, please compare the parts that you have received with the bill of materials provided on this page to assure that you have all the parts necessary for the installation.



CAUTION !!! Never work on a hot vehicle. Serious injury in the form of burns can result if the vehicle has been in use. Allow vehicle to cool prior to installation. Always wear eye protection when working on or under any vehicle.

- 1 Using a 15mm socket loosen clamp holding muffler/tailpipe assembly on. (Image 1)

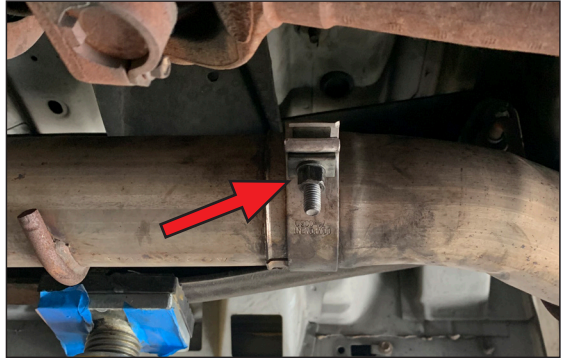


IMAGE 1

- 2 Remove tailpipe section hanger from rubber isolators. (Image 2)

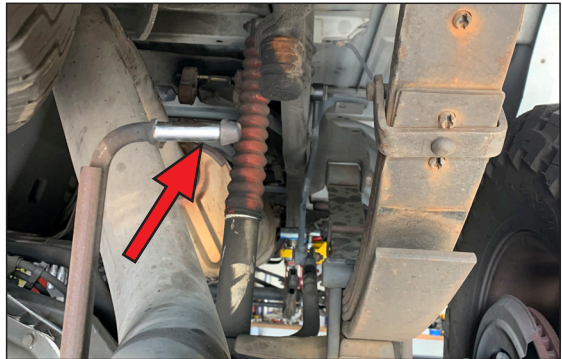


IMAGE 2

- 3 Remove muffler hanger from rubber isolators. (Image 3)

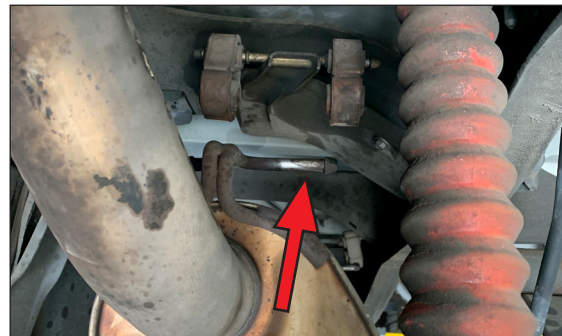


IMAGE 3

-- **4** Tailpipe/muffler can now be removed. If using a lift, the section should come right out. If doing install on the ground, passenger side shock needs to be removed for clearance. Reinstall shock.

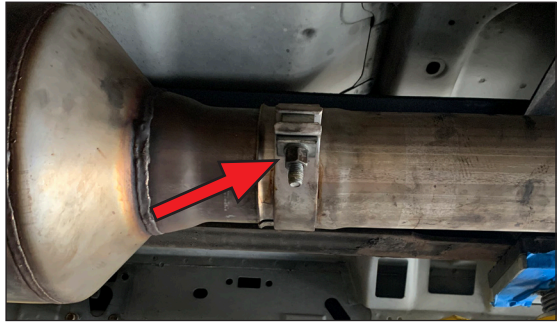


IMAGE 4

5 If equipped remove extension piece connected to catalytic converter using 15mm socket (Image 4). Remove hanger from rubber isolator as well. (Image 5)

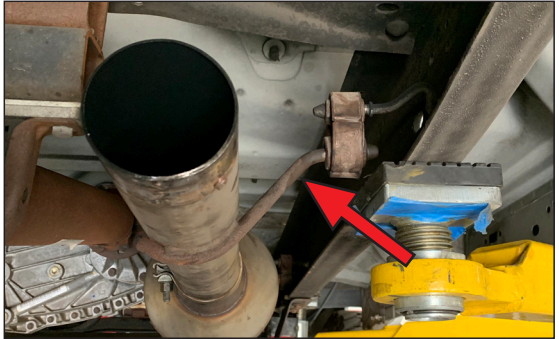


IMAGE 5

6 Using 15mm socket remove two nuts holding CAT to the downpipe and remove rubber isolator from CAT section. Save nuts for reinstallation later. (Image 6)



IMAGE 6

7 Under the hood, loosen and remove V-band clamp holding downpipe to the turbo with 11mm socket. (Image 7)

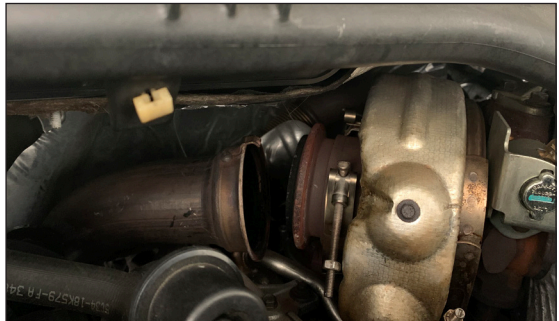


IMAGE 7

8 Downpipe can be removed two different ways:

a. Cut the downpipe at the firewall and remove in two pieces.

b. Remove transmission crossmembers (Image 8). **Be sure to properly support transmission before loosening crossmember.** There are three bolts on driver frame rail (18mm) (Image 9), two nuts holding crossmember to transmission (21mm) (Image 10), and six bolts on the passenger frame rail (15mm)



IMAGE 8



IMAGE 9



IMAGE 10

10 Install new downpipe using original v-band clamp. Do not fully tighten clamp. You still need some adjustment in the pipe. (Image 11)

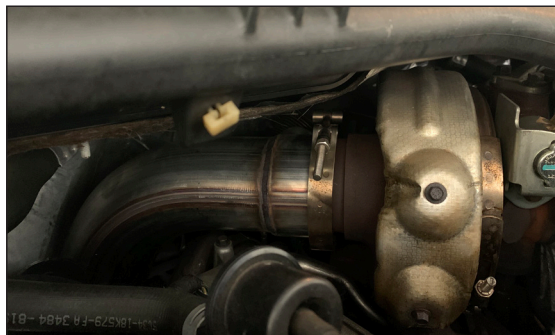


IMAGE 11

- 11** Using the 3 ½" clamp loosely install the front pipe to the downpipe. (Image 12)



IMAGE 12

- 12** Install CAT flange adaptor to the CAT using original hardware (15mm) (Image 13)



IMAGE 13

- 13** Install CAT with flange onto downpipe (4" clamp) and hanger to rubber isolator. (Image 14)

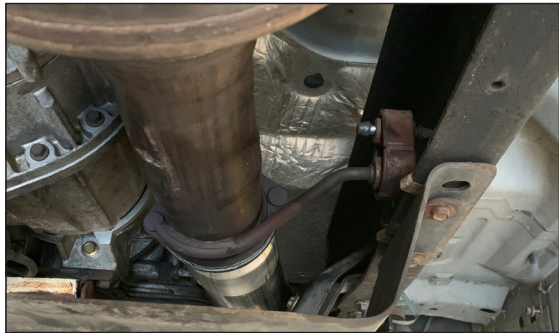


IMAGE 14

- 14** Install extension pipe adaptor to rear of CAT with 3 ½" clamp. (Image 15)



IMAGE 15

- 15** Install extension pipe with 4" clamp with medium hanger into adaptor. (Image 16)



IMAGE 16

- 16** Install muffler or muffler delete pipe using 4" double hanger. (Image 17)

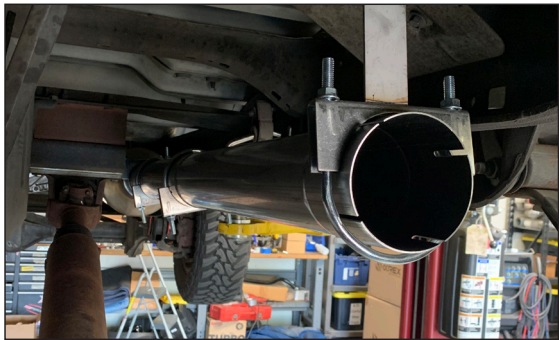


IMAGE 17

- 18** Install tailpipe section into over axle section with 4" clamp and rubber hanger. (Image 19 & 20)



IMAGE 18

- 19** Install exhaust tip and align exhaust. (Image 21)

20 Using 11mm socket tighten turbo v-band clamp.

21 Using a 14mm socket start at the down-pipe and tighten all clamps.



IMAGE 19



IMAGE 20



IMAGE 21





SD-6.0PEX03-01-20

2020



#1 IN PERFORMANCE PARTS & KITS

2025 OPPORTUNITY DR. ROSEVILLE, CA 95678 SINISTERDIESEL.COM 888.966.6543