



# DPF Back Exhaust

2013-2018 Dodge/RAM 6.7L Cummins (Install Time: 3 hours)





# DISCLAIMER

---

1) By installing this product onto your vehicle, you assume all risk and liability associated with its use.

2) It is your responsibility to make sure your vehicle complies with all federal, state, and local emissions laws. Federal and many state and local laws prohibit the removal, modification or rendering in-operative of any part of the design affecting emissions or safety on motor vehicles used on a public street or highway. Violation may result in a fine of up to \$32,500 per vehicle (or possibly higher depending on changes in the law). All civil penalties and fines for removing your vehicle's emissions equipment are the sole responsibility of the end user.

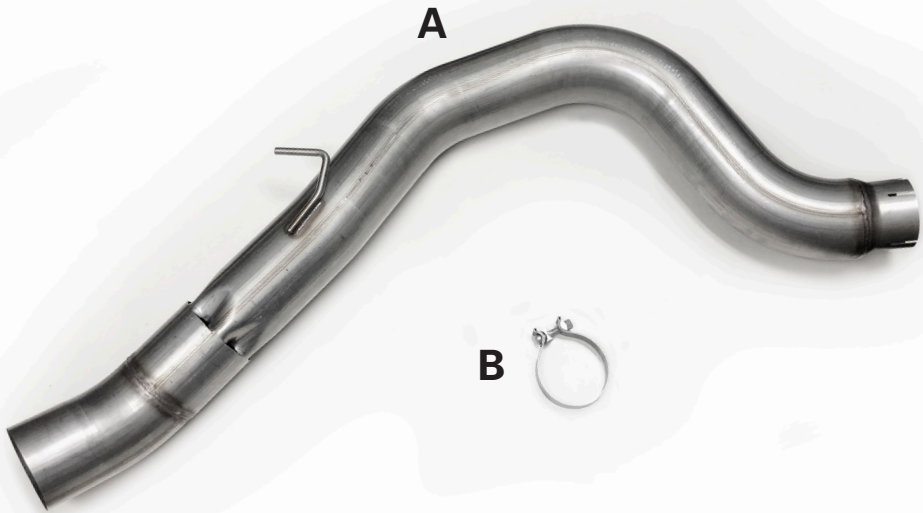
3) Due to its high performance nature, this product may void vehicle manufacturer's warranty.

4) Sinister Mfg Company, Inc. is not responsible for misuse of its products. By installing this product, you release Sinister Mfg Company, Inc. of any and all liability associated with its use.

5) Depending on where you live, restrictions may apply. Check all applicable laws before installing or using!

6) The purchaser and end user releases, indemnifies, discharges and holds harmless Sinister Mfg Company, Inc. from any and all claims, damages, causes of action, injuries, or expenses resulting from or relating to the use or installation of this product that is in violation of the terms and conditions on this page, the product disclaimer, and/or the product installation instructions. Sinister Mfg Company, Inc. will not be liable for any direct, indirect, consequential, punitive, statutory, or incidental damages or fines caused by the use or installation of this product.

---



<b>PART:</b>	<b>DESCRIPTION:</b>	<b>QTY:</b>
<b>A</b>	<b>5" Tail Section</b>	<b>1</b>
<b>B</b>	<b>4" Band Clamp</b>	<b>1</b>

***If you have any issues regarding this product, or if it arrives with missing parts please contact Sinister Diesel directly at (888) 966-6543. Thank you.***

**IMPORTANT: READ ALL INSTRUCTIONS PRIOR TO INSTALL.** Prior to installation, please compare the parts that you have received with the bill of materials provided on this page to assure that you have all the parts necessary for the installation.



**CAUTION !!!** Never work on a hot vehicle. Serious injury in the form of burns can result if the vehicle has been in use. Allow vehicle to cool prior to installation. Always wear eye protection when working on or under any vehicle.

**NOTE: NOT RECOMMENDED FOR VEHICLES EQUIPPED WITH AIR SUSPENSION**

## REMOVAL OF STOCK SYSTEM:

**1** Use a liberal amount of penetrating lubricant to all hangers and rubber insulators. (Image 1)

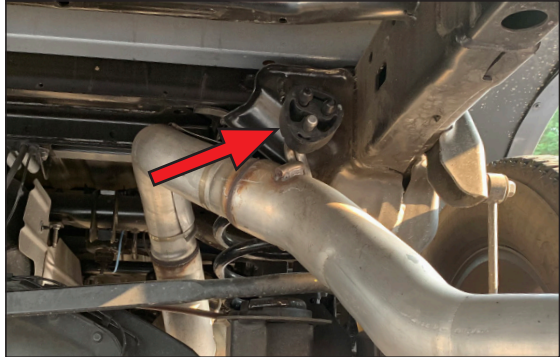


IMAGE 1

**2** Lower the spare tire and remove the spare tire heat shield (4 bolts). (Image 2)

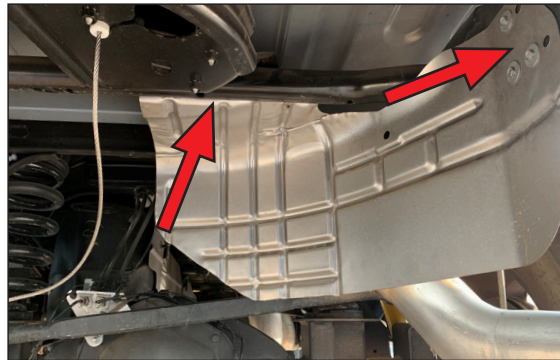


IMAGE 2

**3** Loosen the nut on the clamp located behind the particulate filter. (Image 3)

**4** Remove the tail pipe from the particulate filter and then from the factory rubber insulator. Remove the stock exhaust from the vehicle.

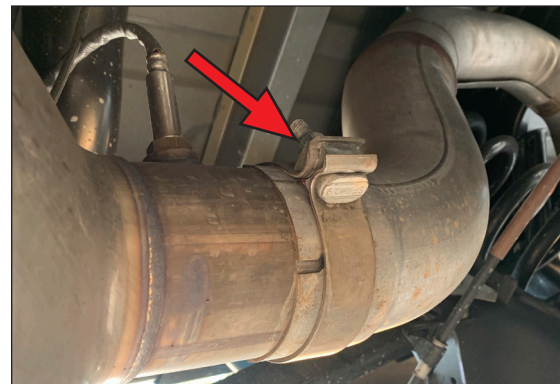


IMAGE 3



## INSTALLATION OF SINISTER® EXHAUST:

- 1 Slide the 4" Clamp (B) onto the outlet end of the particulate filter. (Image 4) Install the 5" Tail Pipe (A) from the rear of the truck, over the axle and install into the factory rubber insulator. (Image 5)

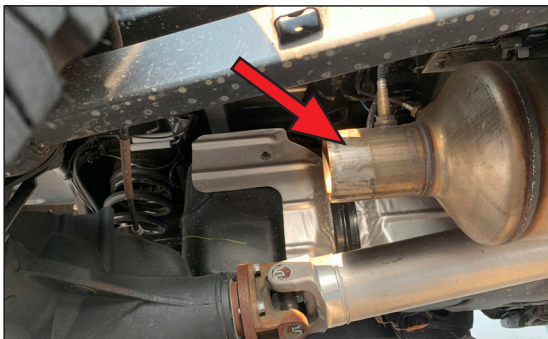


IMAGE 4

- 2 Install the 5" Tail Pipe (A) onto the particulate filter, taking care to align the tab on the filter to the slot in the 5" Tail Pipe (A).

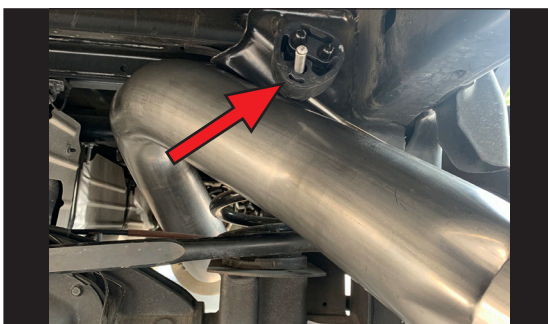


IMAGE 5

- 3 Re-install the spare tire heat shield and raise the spare tire into position. (Image 7)

- 4 Align the exhaust as required. Starting at the front of the exhaust, tighten clamp at outlet of particulate filter.



IMAGE 6

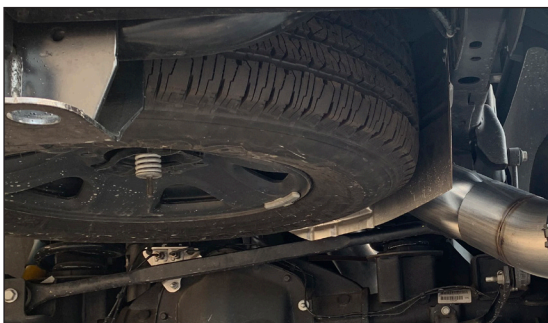


IMAGE 7

- 5 Install the Exhaust Tip and adjust to fit. Tighten the lock bolt located on the Exhaust Tip. (Image 8)

- 6 Check entire length of the exhaust system to ensure that there is suitable clearance around the spare tire, fuel and brake lines, or any wiring. If not, relocate or adjust accordingly.



IMAGE 8

Installation of your new Sinister® DPF Back Exhaust is finished. Enjoy!



SD-6.7CEX13

2020



**#1 IN PERFORMANCE PARTS & KITS**

2025 OPPORTUNITY DR. ROSEVILLE, CA 95678 [SINISTERDIESEL.COM](http://SINISTERDIESEL.COM) 888.966.6543