

INSTALLATION GUIDE



Coolant Filter Kit

2003 - 2007 Dodge Cummins 5.9L

(Install Time: 1-3 hours)





DISCLAIMER

1) By installing this product onto your vehicle, you assume all risk and liability associated with its use.

2) It is your responsibility to make sure your vehicle complies with all federal, state, and local emissions laws. Federal and many state and local laws prohibit the removal, modification or rendering inoperative of any part of the design affecting emissions or safety on motor vehicles used on a public street or highway. Violation may result in a fine of up to \$32,500 per vehicle (or possibly higher depending on changes in the law). All civil penalties and fines for removing your vehicle's emissions equipment are the sole responsibility of the end user.

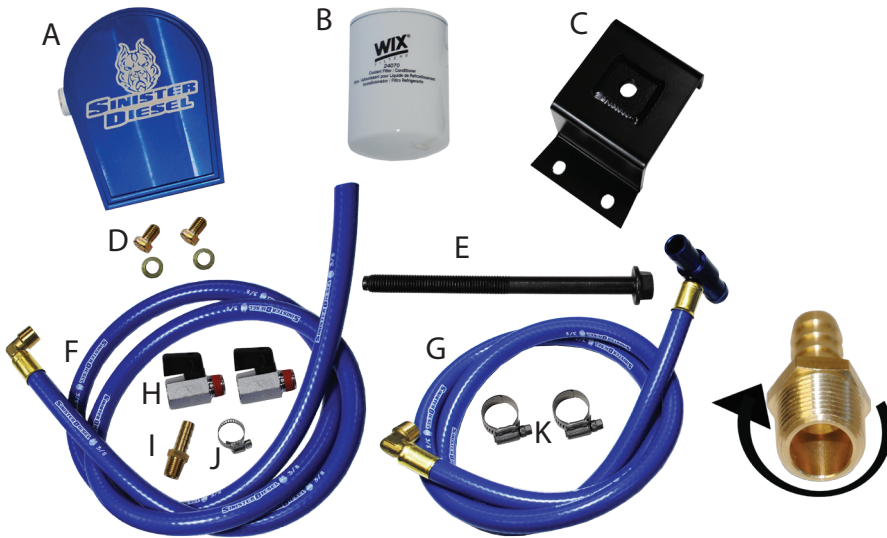
3) Due to its high performance nature, this product may void vehicle manufacturer's warranty.

4) Sinister Mfg Company, Inc. is not responsible for misuse of its products. By installing this product, you release Sinister Mfg Company, Inc. of any and all liability associated with its use.

5) Depending on where you live, restrictions may apply. Check all applicable laws before installing or using!

6) The purchaser and end user releases, indemnifies, discharges and holds harmless Sinister Mfg Company, Inc. from any and all claims, damages, causes of action, injuries, or expenses resulting from or relating to the use or installation of this product that is in violation of the terms and conditions on this page, the product disclaimer, and/or the product installation instructions. Sinister Mfg Company, Inc. will not be liable for any direct, indirect, consequential, exemplary, punitive, statutory, or incidental damages or fines caused by the use or installation of this product.

03-07 5.9L Cummins Coolant Filter Kit



PACKING LIST:

<u>Part #</u>	<u>QTY.</u>	<u>Description</u>
A	1	Coolant Filter Block
B	1	Coolant Filter
C	1	Coolant Filter Block Mounting Bracket
D	2	3/8"-16 Bolts and 3/8" Lock Washers
E	1	Long M14 Bolt
F	1	68" Silicone Coolant Supply Line
G	1	56" Silicone Coolant return Line
H	2	1/4 Turn Ball Valves
I	1	1/4" NPT Straight Barb Fitting
J	1	Small Hose Clamp
K	2	Large #10 Hose Clamps

The thread seal tape should be wrapped clockwise when looking at the fitting from this angle.

Read all instructions prior to install.

Note: *Prior to installation, please compare the parts that you have received with the bill of materials provided on this page to assure that you have all the parts necessary for the installation.*



CAUTION!!! Never work on a hot vehicle. Serious injury in the form of burns can result if the vehicle has been in use. Allow vehicle to cool prior to installation. Always wear eye protection when working on or under any vehicle.

Note: *Installation of the Sinister Manufacturing Company Coolant Filtration System requires access of the coolant system, resulting in coolant loss. We suggest draining some of the coolant before you start.*

Step 1: Drain one gallon of coolant. With the radiator cap off, use pliers to open the petcock drain valve. This is located on the bottom back driver side of the radiator. (*Image 1*)

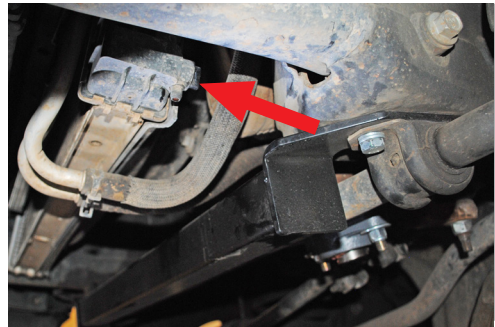


Image 1

Step 2: Mount the bracket to the frame on the passenger side using the supplied long M14 bolt. The bolt will be installed from underneath the frame and through the factory holes to the bracket placed on top of the frame. (*Image 2 and 3*)



Image 2



Image 3

Step 3: Using a 21mm combination wrench, install the 1/4 turn ball valves to the coolant filter block. Then using a 1/2" combination wrench, install the longer coolant supply line with the open end to the top of the coolant filter block. (Image 4)

Note: The valves have an orange sealant compound preapplied to the threads and do not need sealant tape.

Step 4: Using a 1/2" combination wrench, install the shorter coolant line with the blue T-fitting to the filter block. (Image 5)

Step 5: Using a 14mm socket and ratchet, mount the coolant filter block to the mounting bracket previously installed on the frame using the supplied 3/8" bolts and lock washers. (Image 6)

Step 6: Lubricate the seal on the coolant filter with petroleum jelly, then install the filter onto the filter block. (Image 7)

Step 7: Route the coolant lines up over the body mount support and up into the engine compartment. Route them along the outside of the frame to clear the lines of the exhaust down pipe. (Image 7)

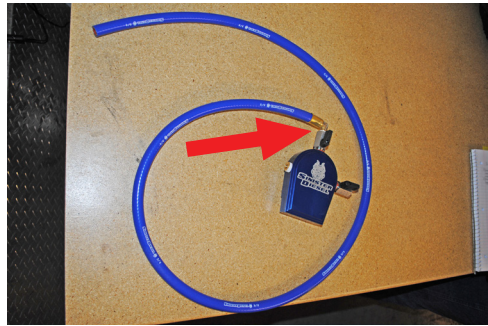


Image 4

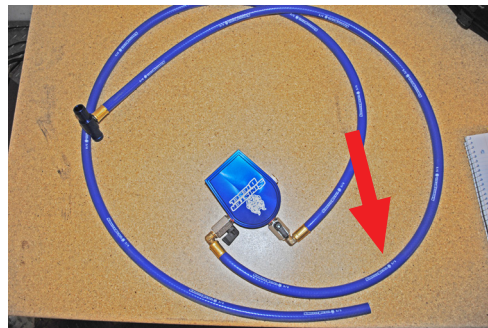


Image 5



Image 6



Image 7

Step 8: Using a 1/4" Allen wrench, remove the 1/4" NPT plug from the head of the motor. This is located on the passenger side front of the engine. (Image 8)

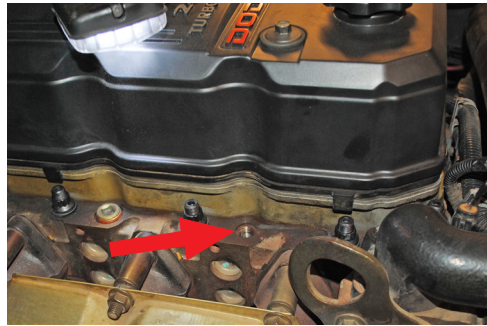


Image 8

Step 9: Wrap thread seal tape on the threads of the brass barbed fitting. Using a 15mm combination wrench or deep socket, install the brass barbed fitting on the motor where the NPT plug was previously removed. (Image 9 and 10)

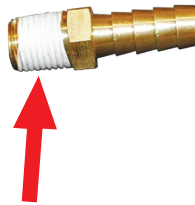


Image 9



Image 10

Step 10: Install the coolant line with the open end onto the barbed fitting that was previously installed in Step 9. Use the small size 6 hose clamp to secure it in place. (Image 11)

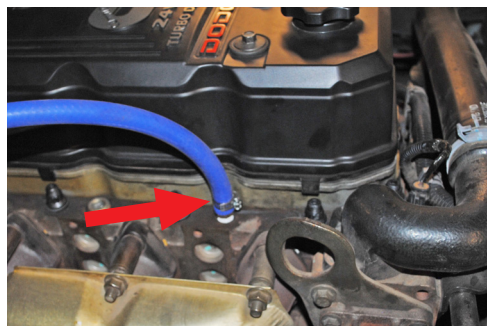


Image 11

Step 11: Cut a one inch section out of the heater discharge line near the firewall on the passenger side of the engine. (*Image 12*)



Image 12

Step 12: Install the blue T-fitting into the heater discharge hose and secure it with the two supplied size 10 hose clamps. (*Image 13*)



Image 13

Step 13: Using the supplied zip tie, secure the coolant lines away from the exhaust down pipe. (*Image 14*)

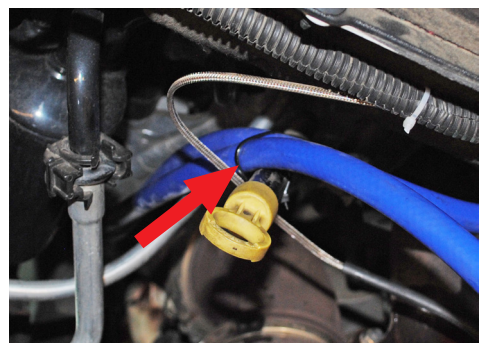


Image 14

Step 14: Make sure the 1/4 turn ball valves are open on the coolant filter block. Refill the coolant to factory specifications. Double check the coolant level with engine at operating temperature, add coolant as necessary.

Maintenance:

*Regularly check and change filter.
Regularly check for leaks and tighten any loose bolts or clamps.*



SD-COOLFIL-5.9-03

2023



#1 IN PERFORMANCE PARTS & KITS

2025 OPPORTUNITY DR. ROSEVILLE, CA 95678 SINISTERDIESEL.COM 888.966.6543