

INSTALLATION GUIDE



Steering Box Support

1994–2019 Dodge 5.9L/6.7L Cummins





DISCLAIMER

1) By installing this product onto your vehicle, you assume all risk and liability associated with its use.

2) It is your responsibility to make sure your vehicle complies with all federal, state, and local emissions laws. Federal and many state and local laws prohibit the removal, modification or rendering inoperative of any part of the design affecting emissions or safety on motor vehicles used on a public street or highway. Violation may result in a fine of up to \$32,500 per vehicle (or possibly higher depending on changes in the law). All civil penalties and fines for removing your vehicle's emissions equipment are the sole responsibility of the end user.

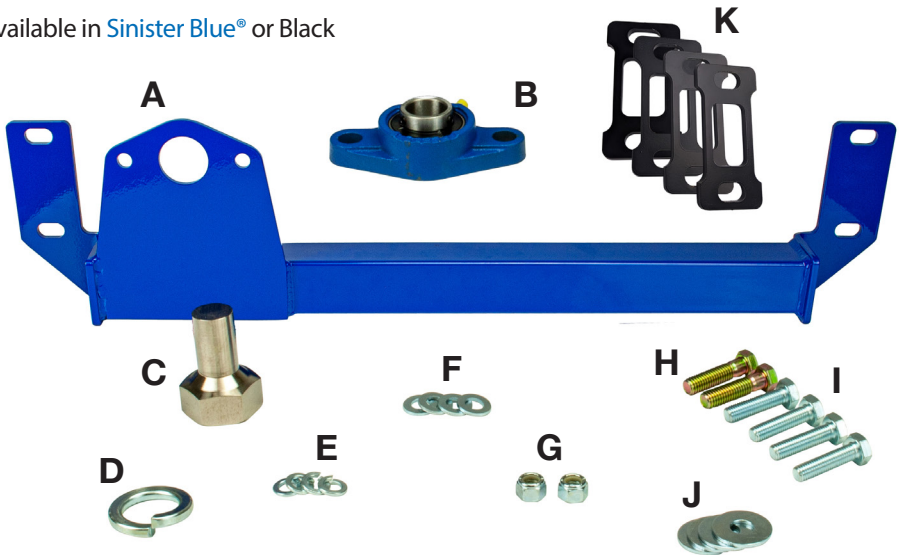
3) Due to its high performance nature, this product may void vehicle manufacturer's warranty.

4) Sinister Mfg Company, Inc. is not responsible for misuse of its products. By installing this product, you release Sinister Mfg Company, Inc. of any and all liability associated with its use.

5) Depending on where you live, restrictions may apply. Check all applicable laws before installing or using!

6) The purchaser and end user releases, indemnifies, discharges and holds harmless Sinister Mfg Company, Inc. from any and all claims, damages, causes of action, injuries, or expenses resulting from or relating to the use or installation of this product that is in violation of the terms and conditions on this page, the product disclaimer, and/or the product installation instructions. Sinister Mfg Company, Inc. will not be liable for any direct, indirect, consequential, punitive, statutory, or incidental damages or fines caused by the use or installation of this product.

Available in **Sinister Blue®** or Black



PART:	DESCRIPTION:	QTY:
A	Steering Box Support	1
B	Bearing Assembly Block	1
C	Sector Shaft	1
D	7/8" Lock Washer	1
E	M10 Lock Washer	4
F	M10 Flat Washer	4
G	7/16" Nuts	2
H	7/16-14 x 1 3/4" Bolts	2
I	Brace Mounting Bolts	4
J	7/16" Flat Washers	4
K	Spacers (2013+ Applications)	4

IMPORTANT: READ ALL INSTRUCTIONS PRIOR TO INSTALL. Prior to installation, please compare the parts that you have received with the bill of materials provided on this page to assure that you have all the parts necessary for the installation.



CAUTION !!! Never work on a hot vehicle. Serious injury in the form of burns can result if the vehicle has been in use. Allow vehicle to cool prior to installation. Always wear eye protection when working on or under any vehicle.

IMPORTANT: With a used vehicle, we suggest using a penetrating spray lubricant to be applied liberally to bolts. When doing so, allow a significant amount of time for the chemical to lubricate the threads before attempting to disassemble. For this application these will be the bolts indicated in Step 1.

1 Hold the sway bar or support the sway bar with a jack stand. Remove the four mounting bolts (15mm) that secure the sway bar to the frame. (Image 1)

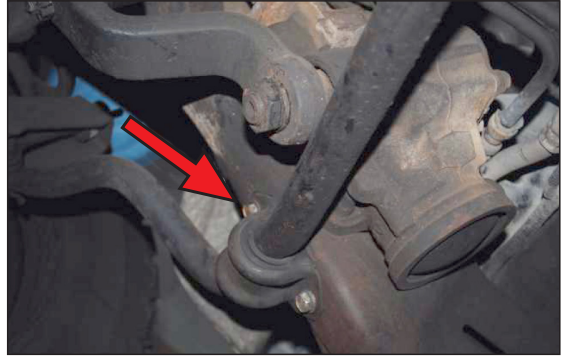


IMAGE 1

2 Allow the sway bar to swing down and rest on the steering linkage. (Image 2)



IMAGE 2

3 Using the correct socket or wrench, remove the steering box sector shaft nut and lock washer. (Image 3)



IMAGE 3

4 Install the new sector shaft nut (C), using new lock washer (D) with a 1-1/4" deep socket and torque to factory torque specifications. (Image 4)

5 Slide support bar into place, with the mounting feet positioned in between the sway bar mount and frame. When the sway bar is moved into place, the large diameter hole on the bearing plate will be approximately centered on the sector shaft nut. (Image 5)

Note: For 2013+ If clearance is needed between the stabilizer (A) and sector shaft nut (C), add one spacer (K) above the stabilizer, and if clearance is needed between the stabilizer and the sway bar, add one spacer between the stabilizer and the sway bar mounts.

Note: In newer model trucks the bearing plate will be positioned above the swaybar (Image 7)

6 Install the four supplied 17mm bolts (I) with washers (F) to resecure the sway bar and steering box stabilizer to the frame. Do not tighten at this time; ensure that the sector shaft is centered in the hole on the bearing plate. (Image 8 arrow)



IMAGE 4

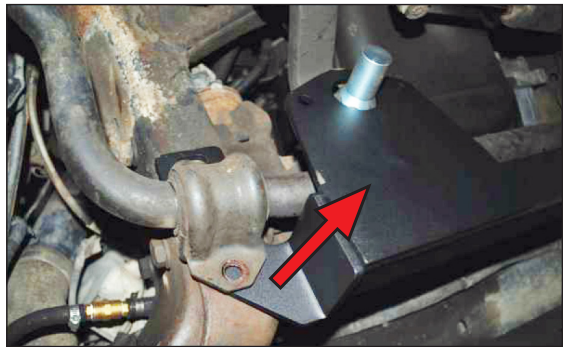


IMAGE 5

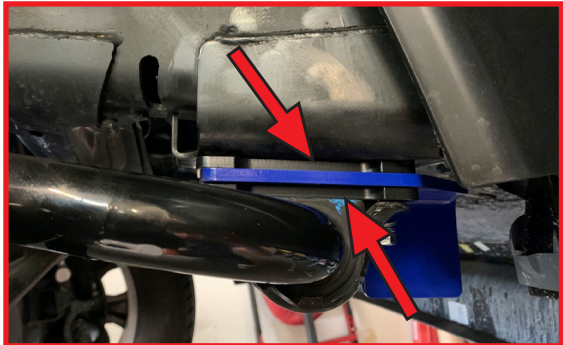


IMAGE 6

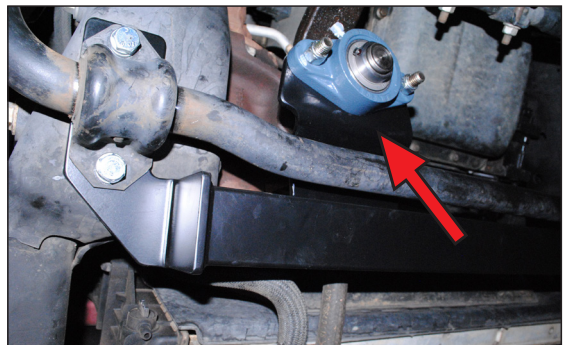


IMAGE 7

7 Install the two bolts (H) through the small holes in the bearing mounting area so that the threads are hanging (Image 8)

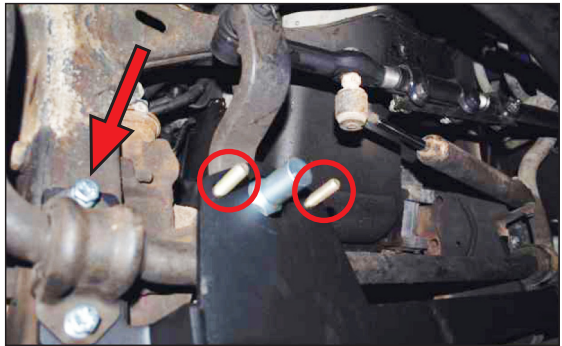


IMAGE 8

8 Install bearing assembly (B) over the sector shaft nut until bearing block comes to rest on the support bracket. With the two bolts from Step 7 still in place, install locking washers (E) & nuts (G) snug. Do not fully tighten at this time. (Image 9 & 10)



IMAGE 9

Note: The block may not be flat to the mount at this point.

9 Tighten the four sway bar mounting bolts (17mm) to factory torque specifications.



IMAGE 10

Note: Ensure free movement (rotation) of the steering box sector shaft nut. If it's not moving freely, undo the sway bar bolts and re-adjust.

10 Tighten bearing block with lock washers (E) and nyloc nuts (G). (19mm)

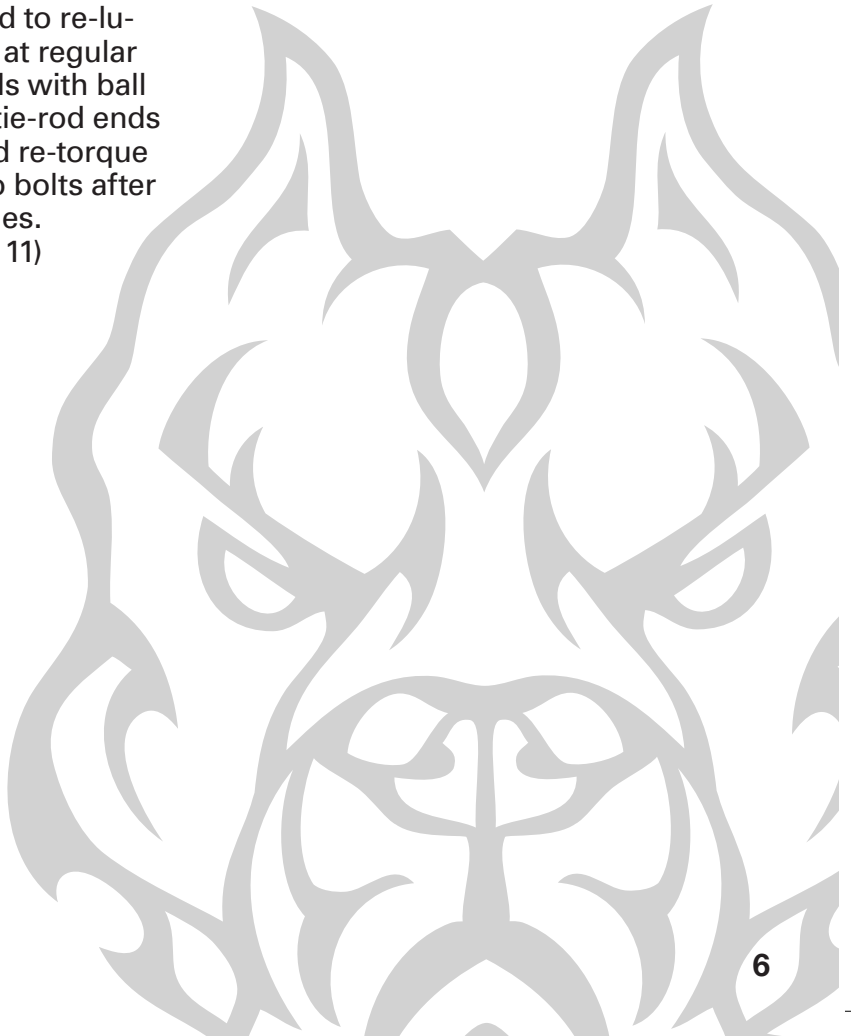
11 Remove the set screws and apply lock tight.

12 Install and tighten the set screws (3/32" Hex key).

13 Check the zerk grease fitting is tight; use standard grease gun to apply grease to the bearing. It is recommended to re-lubricate at regular intervals with ball joints, tie-rod ends etc. and re-torque the two bolts after 500 miles. (Image 11)



IMAGE 11



SD-DODGE-SBS

2020



#1 IN PERFORMANCE PARTS & KITS

2025 OPPORTUNITY DR. ROSEVILLE, CA 95678 SINISTERDIESEL.COM 888.966.6543