



# Degas Bottle

2008-2010 Ford 6.4L Powerstroke

Install Time 4-6 Hours





## DISCLAIMER

---

1) By installing this product onto your vehicle, you assume all risk and liability associated with its use.

2) It is your responsibility to make sure your vehicle complies with all federal, state, and local emissions laws. Federal and many state and local laws prohibit the removal, modification or rendering in-operative of any part of the design affecting emissions or safety on motor vehicles used on a public street or highway. Violation may result in a fine of up to \$32,500 per vehicle (or possibly higher depending on changes in the law). All civil penalties and fines for removing your vehicle's emissions equipment are the sole responsibility of the end user.

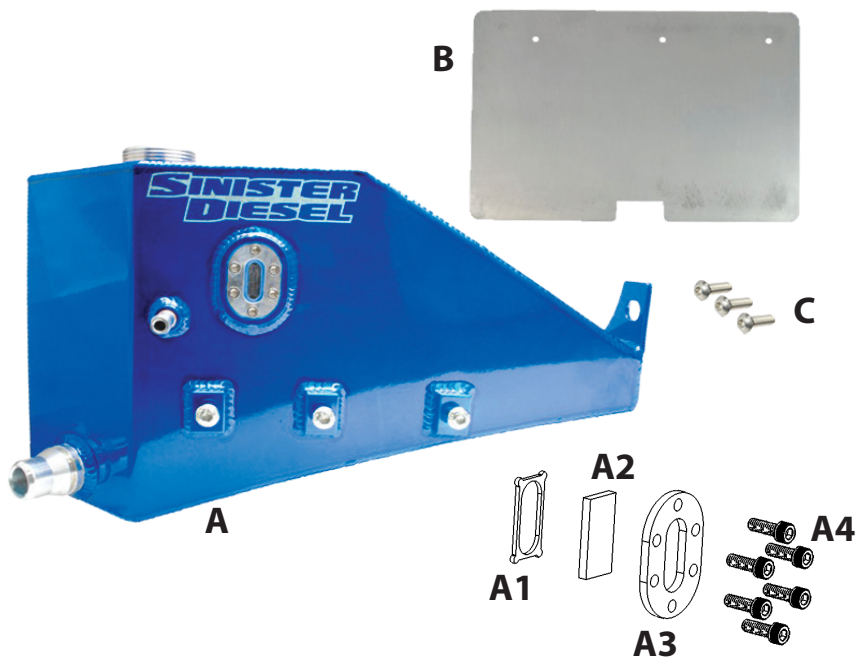
3) Due to its high performance nature, this product may void vehicle manufacturer's warranty.

4) Sinister Mfg Company, Inc. is not responsible for misuse of its products. By installing this product, you release Sinister Mfg Company, Inc. of any and all liability associated with its use.

5) Depending on where you live, restrictions may apply. Check all applicable laws before installing or using!

6) The purchaser and end user releases, indemnifies, discharges and holds harmless Sinister Mfg Company, Inc. from any and all claims, damages, causes of action, injuries, or expenses resulting from or relating to the use or installation of this product that is in violation of the terms and conditions on this page, the product disclaimer, and/or the product installation instructions. Sinister Mfg Company, Inc. will not be liable for any direct, indirect, consequential, punitive, statutory, or incidental damages or fines caused by the use or installation of this product.

---



PART:	DESCRIPTION:	QTY:
A	6.4 Degas Bottle with Sight Glass	1
A1	Sight Glass Gasket ( <i>pre-installed</i> )	1
A2	Sight Glass ( <i>pre-installed</i> )	1
A3	Sight Glass Cover Plate ( <i>pre-installed</i> )	1
A4	Sight Glass Hardware ( <i>pre-installed</i> )	6
B	Hole Template	1
C	M8 Button head Bolts	3
D	1/8 NPT to 3/8" Hose Barb ( <i>shown installed</i> )	1

If you encounter any issues with this product or find missing or broken parts, please scan the QR code for quick access to our Help Center. Our support team is ready to assist you with any questions or concerns to ensure your complete satisfaction.







**CAUTION !!!** Never work on a hot vehicle. Serious injury in the form of burns can result if the vehicle has been in use. Allow vehicle to cool prior to installation. Always wear eye protection when working on or under any vehicle.

**IMPORTANT: READ ALL INSTRUCTIONS PRIOR TO INSTALL**

- 1** Begin with disconnecting both batteries and draining the coolant. Disconnect upper coolant line and remove battery (Image 1).



IMAGE 1

- 2** Remove lower coolant line, there is a wire clip holding it to the factory Degas bottle, use a pick to pull clip off, clip will be reused during installation (Image 2).



IMAGE 2

- 3** Using a 13mm socket, remove the four bolts holding the Degas/Battery Tray in place. Lift the assembly up and out. Note, there is a Vacuum line connected to the bottom of the bottle that will need to be removed.



IMAGE 3

4 With the tray removed, mark it out for cutting, be sure to keep cuts clean and square. A band saw or cut off wheel works good for this. See Page 6 for larger images (Image 3 & 4).

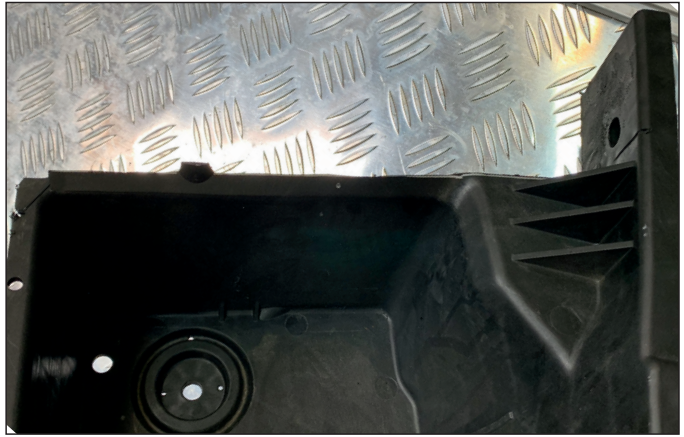


IMAGE 4

5 Using the supplied template, mark the holes to be drilled. Drill holes to .375" (3/8") (Image 5).

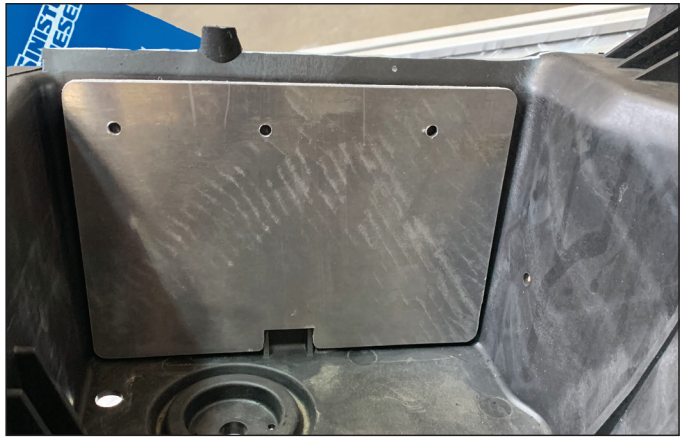


IMAGE 5

6 Reinstall the battery tray using the original hardware (Image 6).

7 The Sinister Degas bottle can now be set into place, using supplied button head bolts, start threading them through the battery tray, into the Degas mounting bungs. Using original hardware, secure Degas bottle to the fender. Tighten all hardware now (Image 7).



IMAGE 6



8 With everything tight, you can now reconnect the two coolant lines, be sure the lower with the spring clip “clicks” into the groove (Image 8).



IMAGE 7

9 The battery can now be reinstalled and coolant added. Fill to the the middle of the sight glass (Image 9).



IMAGE 8

10 With everything tight and full of coolant, you will need to get the truck up to operating temperature. Once cooled back down, check for leaks and add coolant as necessary. Full level is halfway up the sight glass.



IMAGE 9



Cut out hashed area



Completed cut battery tray



**#1 IN PERFORMANCE PARTS & KITS**