

INSTALLATION GUIDE



Bypass Oil Filter Kit

2019 Dodge/Ram 6.7L Cummins

(Install Time: 2-3 hours)





DISCLAIMER

1) By installing this product onto your vehicle, you assume all risk and liability associated with its use.

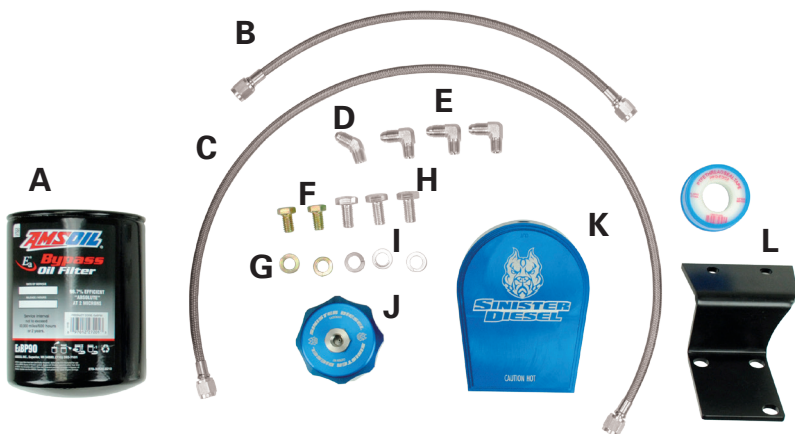
2) It is your responsibility to make sure your vehicle complies with all federal, state, and local emissions laws. Federal and many state and local laws prohibit the removal, modification or rendering in-operative of any part of the design affecting emissions or safety on motor vehicles used on a public street or highway. Violation may result in a fine of up to \$32,500 per vehicle (or possibly higher depending on changes in the law). All civil penalties and fines for removing your vehicle's emissions equipment are the sole responsibility of the end user.

3) Due to its high performance nature, this product may void vehicle manufacturer's warranty.

4) Sinister Mfg Company, Inc. is not responsible for misuse of its products. By installing this product, you release Sinister Mfg Company, Inc. of any and all liability associated with its use.

5) Depending on where you live, restrictions may apply. Check all applicable laws before installing or using!

6) The purchaser and end user releases, indemnifies, discharges and holds harmless Sinister Mfg Company, Inc. from any and all claims, damages, causes of action, injuries, or expenses resulting from or relating to the use or installation of this product that is in violation of the terms and conditions on this page, the product disclaimer, and/or the product installation instructions. Sinister Mfg Company, Inc. will not be liable for any direct, indirect, consequential, punitive, statutory, or incidental damages or fines caused by the use or installation of this product.



| PART: | DESCRIPTION: | QTY: |
|----------|---|----------|
| A | Amsoil Bypass Oil Filter EaBP-90 | 1 |
| B | Short Hose Assembly | 1 |
| C | Long Hose Assembly | 1 |
| D | 45° 1/8" NPT Fitting | 1 |
| E | 90° 1/8" NPT Fitting | 3 |
| F | 3/8" Hex Bolt | 2 |
| G | 3/8" Lock Washer | 2 |
| H | M10 Bolt | 3 |
| I | M10 Lock Washer | 3 |
| J | Sinister Diesel Oil Fill Cap w/ Return Fitting | 1 |
| K | Sinister Diesel Oil Filter Block | 1 |
| L | Mounting Bracket | 1 |
| M | Teflon Tape | 1 |

IMPORTANT: READ ALL INSTRUCTIONS PRIOR TO INSTALL. Prior to installation, please compare the parts that you have received with the bill of materials provided on this page to assure that you have all the parts necessary for the installation.



CAUTION !!! Never work on a hot vehicle. Serious injury in the form of burns can result if the vehicle has been in use. Allow vehicle to cool prior to installation. Always wear eye protection when working on or under any vehicle.

IMPORTANT: We highly recommend changing your oil at the time of install. If doing so, do not re-fill oil system until installation is complete.

- 1** Remove the factory plastic engine cover using an 8mm socket. Note, the dipstick must be removed before cover can be taken off. (Image 1)
- 2** Remove the “L” shaped bracket holding the upper radiator hose to the cylinder head using a 16mm and 10mm socket/wrench. Bracket will not be reused. (Image 2)
- 3** Install the new oil filter mount bracket in place of the previously removed bracket. Install with supplied hardware items: H, I, & L. You will need a 8mm allen socket to install. (Image 3)

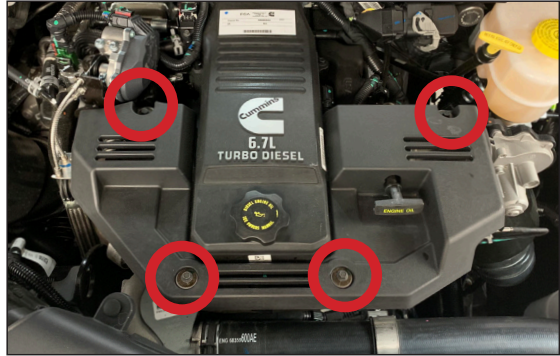


IMAGE 1

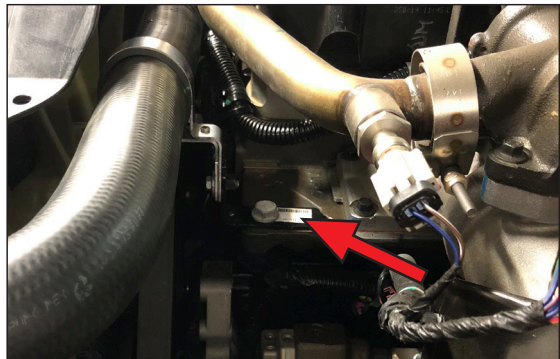


IMAGE 2

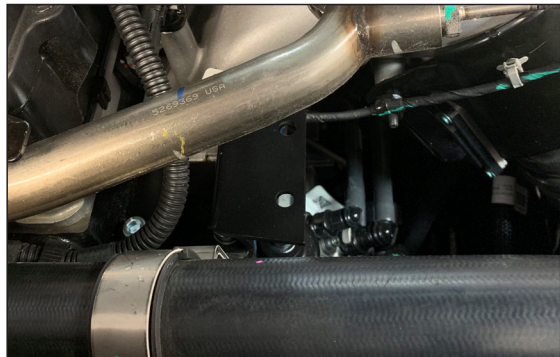


IMAGE 3

Note: The factory intake does NOT need to be removed to gain access to oil filter plug (Intake removed in pictures to better show line routing).

4 With access to the oil filter housing, remove the 1/8" NPT plug using a 7/16" wrench and replace with 45° fitting (Item D) (Image 4 & 5)



IMAGE 4

5 The longer oil line (Item C) can now be attached to the fitting installed in previous step in the factory filter housing and routed up and over the cylinder head. (Image 5)



IMAGE 5

6 You can now pre-assemble the new Sinister filter block, using Items : K & E, note the orientation of the fittings (Image 6). Attach assembled block to the bracket previously installed using a 9/16" wrench and items F & G (Image 7)



IMAGE 6

7 The oil line previously installed can now be attached to the inlet fitting (Marked "In") on the filter block. (Image 7)

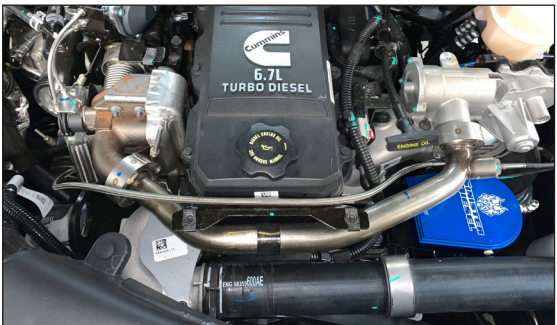


IMAGE 7

8 With the oil line routed on the front side of the valve cover, you can now attach the plastic engine cover using the previously removed bolts and an 8mm socket. Note, the cover will hold the oil line from moving. (Image 8)



IMAGE 8

9 You can now replace the oil fill cap with the new Sinister bypass cap using items: J & E (Image 9). Attach the shorter oil line from the filter housing to cap, Item B. (Image 10)



IMAGE 9

10 Fill the Amsoil filter (Item A) with approx. 1 quart of your preferred oil, and attach to filter block.



IMAGE 10

11 Ensure the oil system is filled to factory specifications and check for any leaks.

Note: After running vehicle, check oil levels and add oil as necessary. Amsoil recommends 60k miles or 2 years on servicing the filter, we recommend changing the filter every 20k miles, or once a year.

Installation of your Sinister Diesel Oil Filter Bypass Kit is now complete.



SD-EOF-6.7C-19

2019



#1 IN PERFORMANCE PARTS & KITS

2025 OPPORTUNITY DR. ROSEVILLE, CA 95678 SINISTERDIESEL.COM 888.966.6543