

INSTALLATION GUIDE:



Bypass Oil Filter Kit

1999–2003 Ford 7.3L Powerstroke





DISCLAIMER

1) By installing this product onto your vehicle, you assume all risk and liability associated with its use.

2) It is your responsibility to make sure your vehicle complies with all federal, state, and local emissions laws. Federal and many state and local laws prohibit the removal, modification or rendering in-operative of any part of the design affecting emissions or safety on motor vehicles used on a public street or highway. Violation may result in a fine of up to \$32,500 per vehicle (or possibly higher depending on changes in the law). All civil penalties and fines for removing your vehicle's emissions equipment are the sole responsibility of the end user.

3) Due to its high performance nature, this product may void vehicle manufacturer's warranty.

4) Sinister Mfg Company, Inc. is not responsible for misuse of its products. By installing this product, you release Sinister Mfg Company, Inc. of any and all liability associated with its use.

5) Depending on where you live, restrictions may apply. Check all applicable laws before installing or using!

6) The purchaser and end user releases, indemnifies, discharges and holds harmless Sinister Mfg Company, Inc. from any and all claims, damages, causes of action, injuries, or expenses resulting from or relating to the use or installation of this product that is in violation of the terms and conditions on this page, the product disclaimer, and/or the product installation instructions. Sinister Mfg Company, Inc. will not be liable for any direct, indirect, consequential, punitive, statutory, or incidental damages or fines caused by the use or installation of this product.



PART:	DESCRIPTION:	QTY:
A	69" Stainless Steel Hose	2
B	12" Anti-Chaffe Shielding	2
C	3/8" - 16 x 5/8" Hex Head Bolt	2
D	3/8" Lock Washer	2
E	M8-1.25 x 25 Flange Head Bolt	4
F	M8-1.25 x 25 Flange Washer	4
G	Plug Removal Tool 5/16	1
H	Plug Removal Tool	1
I	1/8 NPT x -4 JIC x 90°	1
J	1/8 NPT x -4 Male	2
K	3/8 NPT x -4 Male	1
L	Teflon Tape	1
M	Skid Plate	1
N	Mounting Bracket	1
O	Sinister Diesel Oil Filter Block	1
P	Amsoil Bypass Oil Filter	1
Q	11" Cable Ties	6

IMPORTANT: READ ALL INSTRUCTIONS PRIOR TO INSTALL. Prior to installation, please compare the parts that you have received with the bill of materials provided on this page to assure that you have all the parts necessary for the installation.



CAUTION !!! Never work on a hot vehicle. Serious injury in the form of burns can result if the vehicle has been in use. Allow vehicle to cool prior to installation. Always wear eye protection when working on or under any vehicle.

IMPORTANT: We highly recommend changing your oil at the time of install. If doing so, do not re-fill oil system until installation is complete.

1 Prep the driver side frame rail for mounting the bracket/oil filter assembly (Image 1).



IMAGE 1

2 Using the supplied 3/8" bolts and lock washers install the filter block to the mounting bracket (Image 2).

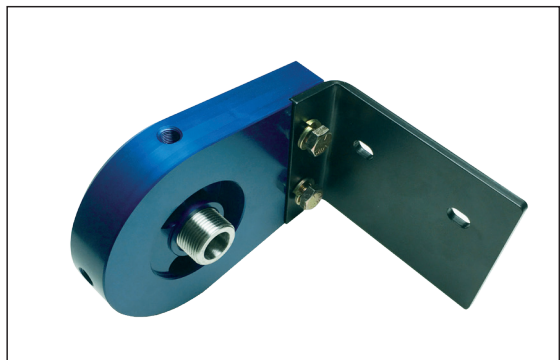


IMAGE 2

3 Install the supplied 90° fitting into the top of the filter block and one of the smaller straight fittings into the left port on the filter block.

4 Install the lines onto the fittings that were installed in the previous step.

5 Using engine oil lubricate the o-ring on the Amsoil oil filter. Be sure to fill the filter about half full and install filter onto the Sinister Diesel filter block. Note: Be sure to not over tighten the filter.



IMAGE 3

6 Using two of the supplied M8 bolts and nuts, install the oil filter block assembly to the driver side frame rail. The bolts will bolt through the frame rail from the inside (Image 3). Be sure to route the stainless-steel oil lines to the inside of the frame rail (Image 4).



IMAGE 4

7 Route the stainless-steel oil lines along the driver side frame rail. Be sure to use the anti-chaff shield anywhere the lines might come into contact with any existing lines or wires (Image 5).



IMAGE 5

8 Route the lines up near the OEM oil filter.

9 Prepare the supply and return ports to install the oil lines. The supply port plug can be removed with a 7/16" wrench. Install the remaining small fitting into the supply port. The return port can be removed with the included plug removal tools. Install the large straight fitting into the return port (Image 6).

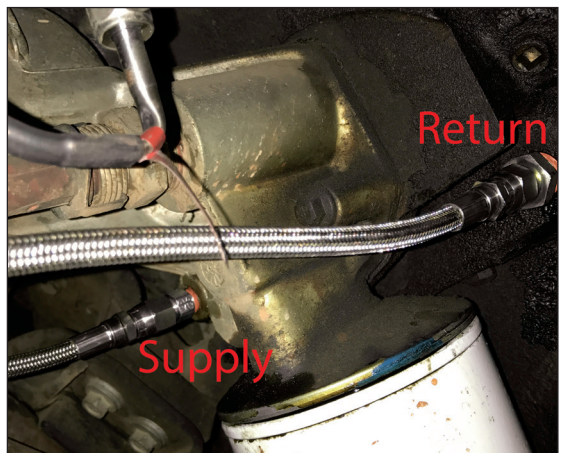


IMAGE 6

- 10** Install the lines to the corresponding supply and return ports. The supply line is installed onto the side of the Sinister Diesel oil filter block and the return line is installed on the top of the Sinister Diesel oil filter block (Image 6 & 7).



IMAGE 7

- 11** With remaining M8 bolts and nuts install the included skid plate (Image 7).
- 12** Ensure the oil system is filled to factory specifications and check for any leaks.

Note: After running vehicle check oil levels and add oil as necessary.

Installation of your Sinister Diesel Oil Filter Bypass Kit is now complete.



SD-EOF-7.3

2018



#1 IN PERFORMANCE PARTS & KITS

2025 OPPORTUNITY DR. ROSEVILLE, CA 95678 SINISTERDIESEL.COM 888.966.6543