



(Hot & Cold side)

Intercooler Pipes

2003–2007 Ford 6.0L Powerstroke

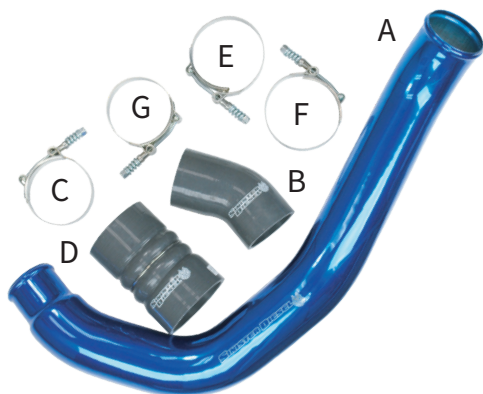




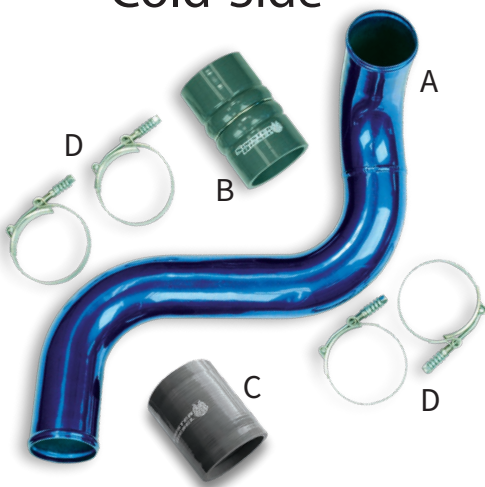
DISCLAIMER

- 1) By installing this product onto your vehicle, you assume all risk and liability associated with its use.
- 2) It is your responsibility to make sure your vehicle complies with all federal, state, and local emissions laws. Federal and many state and local laws prohibit the removal, modification or rendering inoperative of any part of the design affecting emissions or safety on motor vehicles used on a public street or highway. Violation may result in a fine of up to \$32,500 per vehicle (or possibly higher depending on changes in the law). All civil penalties and fines for removing your vehicle's emissions equipment are the sole responsibility of the end user.
- 3) Due to its high performance nature, this product may void vehicle manufacturer's warranty.
- 4) Sinister Mfg Company, Inc. is not responsible for misuse of its products. By installing this product, you release Sinister Mfg Company, Inc. of any and all liability associated with its use.
- 5) Depending on where you live, restrictions may apply. Check all applicable laws before installing or using!
- 6) The purchaser and end user releases, indemnifies, discharges and holds harmless Sinister Mfg Company, Inc. from any and all claims, damages, causes of action, injuries, or expenses resulting from or relating to the use or installation of this product that is in violation of the terms and conditions on this page, the product disclaimer, and/or the product installation instructions. Sinister Mfg Company, Inc. will not be liable for any direct, indirect, consequential, exemplary, punitive, statutory, or incidental damages or fines caused by the use or installation of this product.

Hot-Side



Cold-Side



Hot-Side Kit

PART:	DESCRIPTION:	QTY:
A	Hot Side Charge Pipe	1
B	Smooth Silicone Boot w/ 45° angle	1
C	72-80mm Hose Clamp [Wide (3/4") Band]	1
D	Double-hump Silicone Boot 5 3/8" Long	1
E	84-92mm Hose Clamp	1
F	90-98mm Hose Clamp	1
G	72-80mm Hose Clamp [Thin (1/2") Band]	1
H	CARB EO Sticker (Not shown in image)	1

Cold-Side Kit

PART:	DESCRIPTION:	QTY:
A	Cold Side Charge Pipe	1
B	Double-hump Silicone Boot 5 3/8" long	1
C	Smooth Silicone Boot 4 1/2" long	1
D	84-92mm Hose Clamps	4
E	CARB EO Sticker (Not shown in image)	1

If you encounter any issues with this product or find missing or broken parts, please scan the QR code for quick access to our Help Center. Our support team is ready to assist you with any questions or concerns to ensure your complete satisfaction.





CAUTION!!! Never work on a hot vehicle. Serious injury in the form of burns can result if the vehicle has been in use. Allow vehicle to cool prior to installation. Always wear eye protection when working on or under any vehicle.

IMPORTANT: READ ALL INSTRUCTIONS PRIOR TO INSTALL

Note: Be sure the inside of your charge pipe is clean and free of any debris. Your air intake will have to be removed to install your Sinister Diesel Cold Side Charge Pipe. For your safety, we recommend disconnecting any negative battery terminals whenever working on any vehicle.

SD-INTRPIPE-6.0-COLD

Cold Side Charge Pipe Instructions

Step 1: Remove the factory air filter. Release the clips then pull the front and rear covers up and away from the filter. Pull the filter straight up and out of the vehicle. (Circled In Image 1)

Note: The covers interlock to the bottom of the filter. Pulling out and up releases them.

Step 2: Disconnect the MAF sensor plug. (Image 2)

Step 3: Remove the two hard plastic covers, for the filter, from the vehicle. The rear cover is secured by a hose clamp. Use an 8mm socket or a regular screw-driver to release it. (Image 3)



Image 1

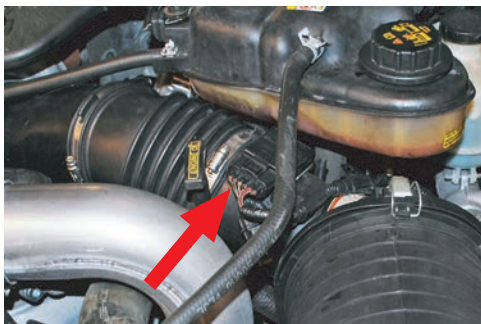


Image 2



Image 3

Step 4: Using an 11mm deep socket, loosen all of the hose clamps on the charge pipe being replaced. Then remove the charge pipes and boots from the vehicle. (Image 4)

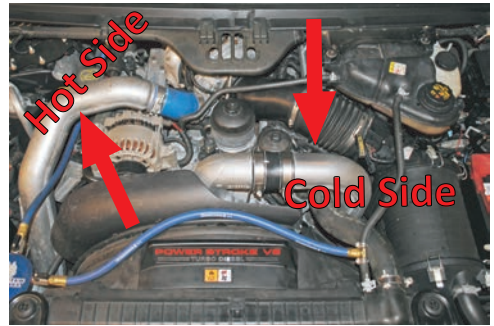


Image 4

Step 5: Clean any oil from the turbo, intercooler and intake elbow connections with a clean rag and glass cleaner.

Note: Make sure the inside of the new charge pipe is clean and free of any debris.

Step 6: Using the supplied silicone boots, install the Sinister Diesel Charge Pipe in place of the stock ones. The rib on the inside goes onto the intake elbow on the manifold. (Image 5)



Image 5

Note: The intercooler on the passenger side has a 1/4" inch larger connection to the silicone boot.

Step 7: Re-install the two hard plastic covers for the filter to the vehicle. Secure the rear cover with the hose clamp.

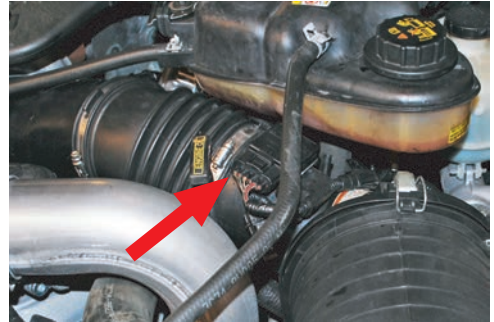


Image 6

Step 8: Reconnect the MAF sensor plug. (Image 6)

Step 9: Re-install the factory air filter in place. (Image 7)

Step 10: Be sure to interlock the plastic tabs on the bottom of the covers to the filter, then secure the clips. (Circled In Image 8)



Image 7



Image 8

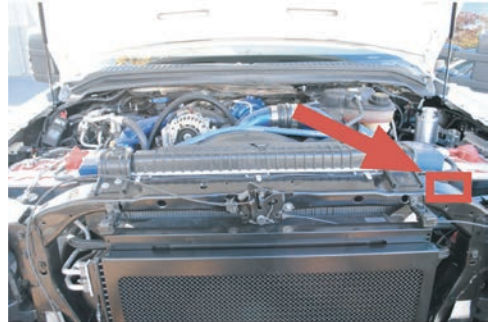


Image 9

- * *E.O. identification labels are required in passing the smog/emissions inspection. The E.O. identification label must be placed on or near the device in the engine compartment when installing the hot/cold charge pipes. (Image 9)*

Hot Side Charge Pipe Instructions

Step 1: Using a 11mm deep socket, loosen the two clamps that secure the stock charge pipe to the turbo outlet. (Image 1)



Image 1

Step 2: Using a 11mm deep socket, loosen the two clamps that secure the stock charge pipe to the inter-cooler. This is located between the passenger battery and the radiator. (Image 2)

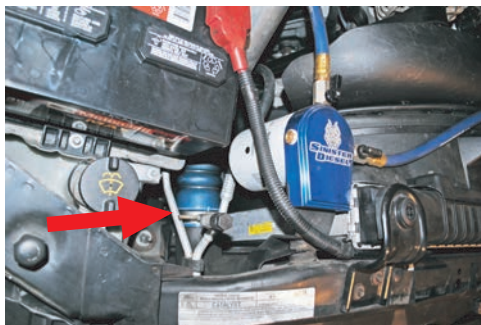


Image 2

Step 3: Remove the stock hot side charge pipe. (Image 3)

Step 4: Install the Sinister Diesel hot side charge pipe with supplied silicone boots and clamps. The thin clamp (G) will be used on the turbo housing. Using a 11mm deep socket, tighten all of the clamps to secure the charge pipe in place. (Image 4)



Image 3



Image 4

SD-INTRPIPE-6.0-COLD

SD-INTRPIPE-6.0-HOT

2024



#1 IN PERFORMANCE PARTS & KITS

2025 OPPORTUNITY DR. ROSEVILLE, CA 95678 SINISTERDIESEL.COM