



(Cold side)

Intercooler Pipe

2008-2010 Ford 6.4L Powerstroke





DISCLAIMER

1) By installing this product onto your vehicle, you assume all risk and liability associated with its use.

2) It is your responsibility to make sure your vehicle complies with all federal, state, and local emissions laws. Federal and many state and local laws prohibit the removal, modification, or rendering inoperative of any part of the design affecting emissions or safety on motor vehicles used on a public street or highway. Violation may result in a fine of up to \$32,500 per vehicle (or possibly higher depending on changes in the law). All civil penalties and fines for removing your vehicle's emissions equipment are the sole responsibility of the end user.

3) Due to its high performance nature, this product may void vehicle manufacturer's warranty.

4) Sinister Mfg Company, Inc. is not responsible for misuse of its products. By installing this product, you release Sinister Mfg Company, Inc. of any and all liability associated with its use.

5) Depending on where you live, restrictions may apply. Check all applicable laws before installing or using!

6) The purchaser and end user releases, indemnifies, discharges, and holds harmless Sinister Mfg Company, Inc. from any and all claims, damages, causes of action, injuries, or expenses resulting from or relating to the use or installation of this product that is in violation of the terms and conditions on this page, the product disclaimer, and/or the product installation instructions. Sinister Mfg Company, Inc. will not be liable for any direct, indirect, consequential, exemplary, punitive, statutory, or incidental damages or fines caused by the use or installation of this product.



PACKING LIST:

Part # QTY. Description

A	1	Silicone Boot 4" Inch
B	1	Silicone Boot 4.5" Inch w/ rib on one side
C	4	Clamps
D	1	Sinister Charge Pipe

Recommended Tools

- 11mm Deep Socket
- 10mm socket
- 13mm socket
- Universal Joint Adapter
- Die Grinder w/ Cutting Wheel
- Plastic Clip Tool

IMPORTANT: READ ALL INSTRUCTIONS PRIOR TO INSTALL. Please compare the parts that you have received with the bill of materials on this page to ensure that you have all the parts necessary for the installation.

SCAN TO REACH OUR HELP CENTER





CAUTION!!! Never work on a hot vehicle. Serious injury in the form of burns can result if the vehicle has been in use. Allow vehicle to cool prior to installation. Always wear eye protection when working on or under any vehicle.

Note: Installation of the Sinister Manufacturing Company Cold Side Charge Pipe requires working next to the battery terminals. It is highly recommended that the batteries are disconnected whenever working on a vehicle. Fitting the Charge Pipe requires cutting of the upper radiator support. We recommend using a die grinder with a cut off wheel.

Step 1: Using a 11mm deep socket, loosen the 4 hose clamps on the passenger side charge pipe.
(Image 1)



Image 1

Step 2: Using a 10mm socket, remove the 7 mounting bolts on the upper radiator support. Make sure you keep track of where the bolts go as they are different lengths.
(Image 2)

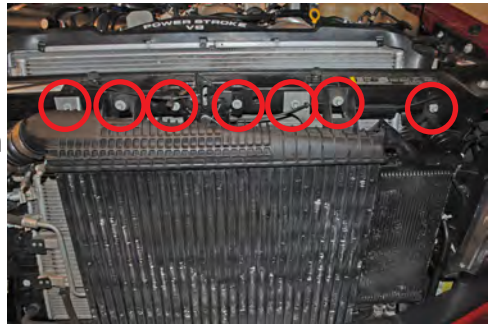


Image 2

Step 3: Remove the silicone boot on the intercooler by pulling forward on the intercooler.
(Image 3)



Image 3

Step 4: Remove the five plastic clips holding the hood latch cable along the upper radiator support. One of the clips has two anchors on it.

Step 5: Remove the two plastic clips that hold the weather gasket to the upper radiator support.
(Image 4 & 5)

Step 6: Using a 10mm short socket with universal adapter and long extension, remove the four bolts and U-brackets that secure the radiator to the upper radiator support. Also remove the rubber bushing from the passenger side of the radiator mount. (Image 6)

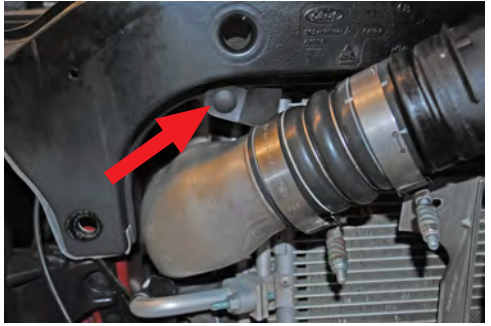


Image 4

Step 7: Using a 13mm socket, Remove the upper radiator support by removing the six bolts.



Image 5

Step 8: Remove the stock charge pipe on the passenger side.

Step 9: Put the Sinister Charge Pipe in place, but do not secure the hose clamps yet. The longer silicone boot with the rib on the inside goes to the intercooler connection. (Image 7)



Image 6

Step 10: To fit the upper radiator support, it is required that you trim material off the support to fit around the new charge pipe. (Image 8)

Optional Note: Spray paint the bar aluminum, semi-flat black, for a finished appearance.

Step 11: Re-install the upper radiator support and secure the charge pipe to the passenger lower mounting bolt.



Image 7



Image 8



Image 9

When securing the charge pipe make sure it is not contacting any other parts. (Image 9)

Step 12: Re-install all of the components following steps 1-6 in reverse order. Be sure to use factory torque specifications on all hardware.

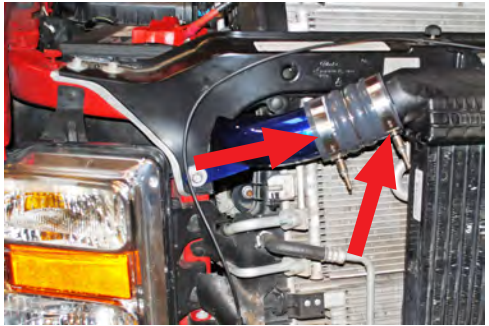
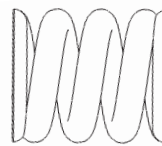
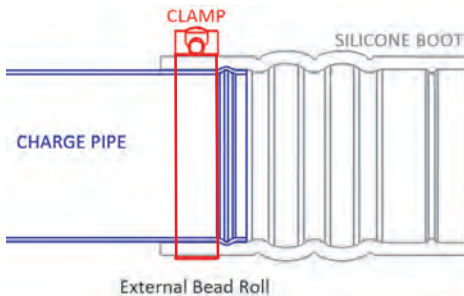


Image 10

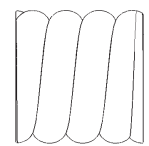
Step 13: Lastly, tighten the clamps on the silicone boots, as shown below in the Silicone Diagram. (Image 10)

SILICONE DIAGRAM: Position silicone boot on the charge pipe far enough that the clamp can be placed directly behind the bead roll and tightened.

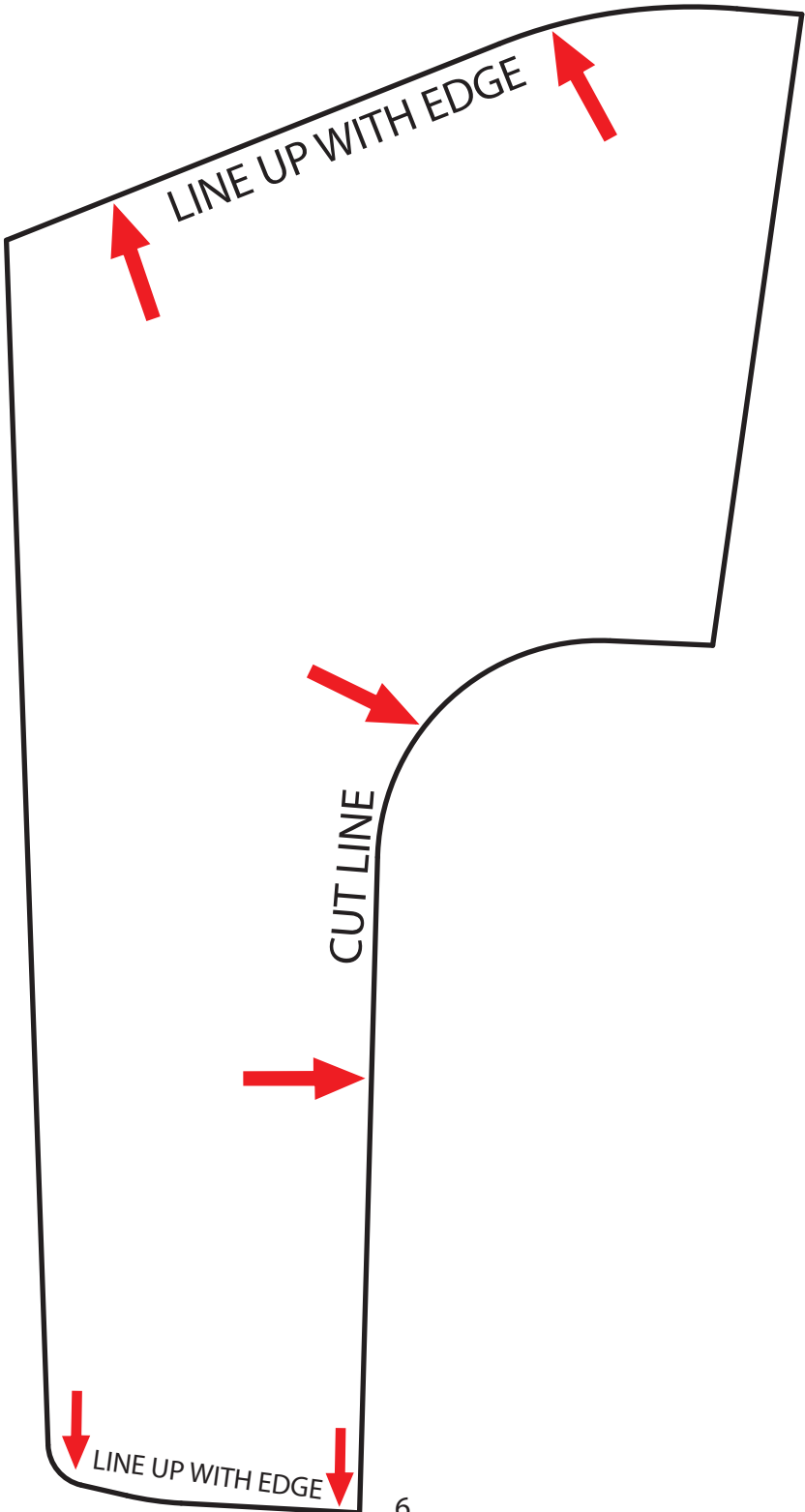
ALL clamps need to be tightened to the point that the spring coils are compressed or touching.



LOOSE



TIGHT





#1 IN PERFORMANCE PARTS & KITS

2025 OPPORTUNITY DR. ROSEVILLE, CA 95678 SINISTERDIESEL.COM