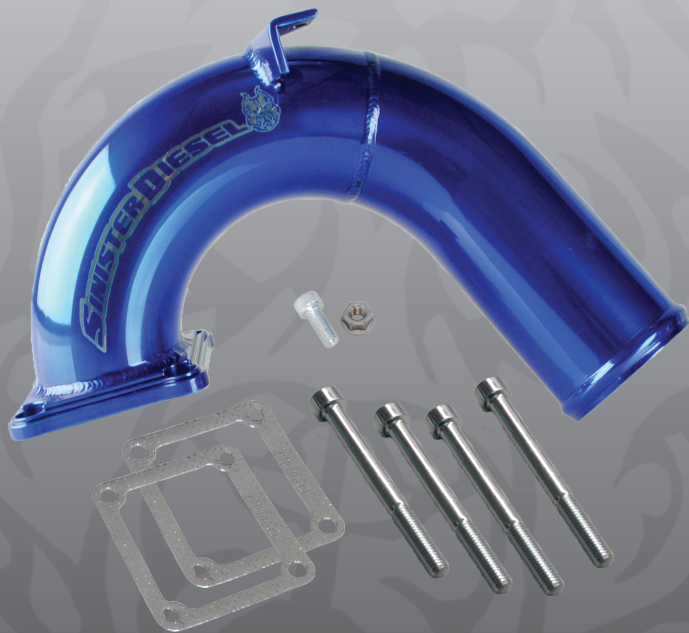


SINISTER DIESEL



2003-2007 5.9L CUMMINS
INTAKE ELBOW



WARNING REGARDING EMISSIONS LAWS

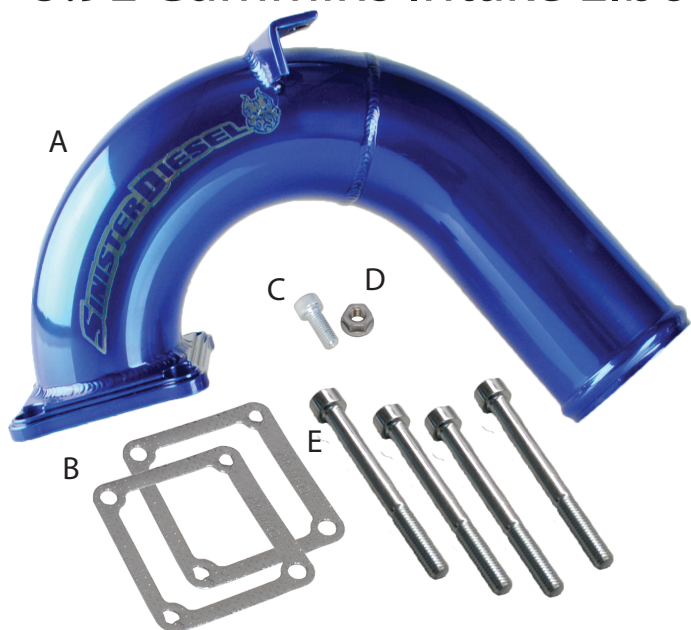
Not legal for sale or use on pollution-controlled motor vehicles anywhere in the United States. Legal ONLY for off-road competition racing vehicles and cannot be used on vehicles that are operated on public streets, roads, or highways.



DISCLAIMER

- 1) By installing this product onto your vehicle, you assume all risk and liability associated with its use.
- 2) It is your responsibility to make sure your vehicle complies with all federal, state, and local emissions laws. Federal and many state and local laws prohibit the removal, modification or rendering inoperative of any part of the design affecting emissions or safety on motor vehicles used on a public street or highway. Violation may result in a fine of up to \$32,500 per vehicle (or possibly higher depending on changes in the law). All civil penalties and fines for removing your vehicle's emissions equipment are the sole responsibility of the end user.
- 3) Due to its high performance nature, this product may void vehicle manufacturer's warranty.
- 4) Sinister Mfg Company, Inc. is not responsible for misuse of its products. By installing this product, you release Sinister Mfg Company, Inc. of any and all liability associated with its use.
- 5) Depending on where you live, restrictions may apply. Check all applicable laws before installing or using!
- 6) The purchaser and end user releases, indemnifies, discharges and holds harmless Sinister Mfg Company, Inc. from any and all claims, damages, causes of action, injuries, or expenses resulting from or relating to the use or installation of this product that is in violation of the terms and conditions on this page, the product disclaimer, and/or the product installation instructions. Sinister Mfg Company, Inc. will not be liable for any direct, indirect, consequential, exemplary, punitive, statutory, or incidental damages or fines caused by the use or installation of this product.

03-07 5.9L Cummins Intake Elbow



PACKING LIST:

<u>Part #</u>	<u>QTY.</u>	<u>Description</u>
A	1	Intake Elbow
B	2	Intake gasket
C	1	M8x20 Allen Head Bolt
D	1	M8 Flange Nut
E	4	M8x80 Allen Head Bolts

Read all instructions prior to install.

Note: Prior to installation, please compare the parts that you have received with the bill of materials provided on this page to assure that you have all the parts necessary for the installation.



CAUTION!!! Never work on a hot vehicle. Serious injury in the form of burns can result if the vehicle has been in use. Allow vehicle to cool prior to installation. Always wear eye protection when working on or under any vehicle.

Note: *Be careful when working around open engine ports. Dropping debris or tools into the opening can cause detrimental engine damage.*

Step 1: Disconnect batteries.

Step 2: Use 11mm deep socket to release the hose clamp on the stock intake elbow. (Image 1)

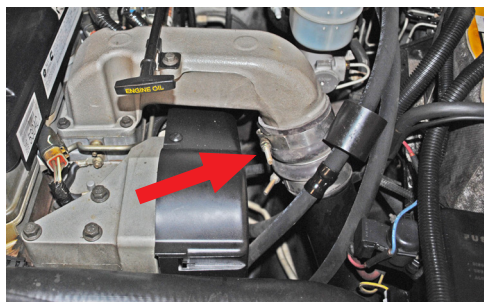


Image 1

Step 3: Use a 10mm socket to remove the engine oil dip stick from the intake mount. (Image 2)

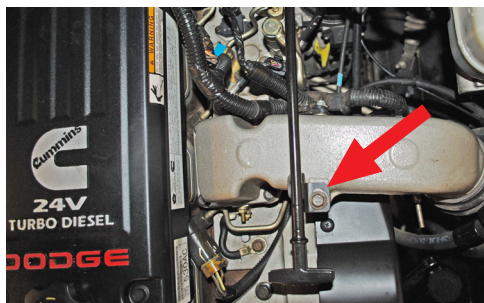


Image 2

Step 4: Use a 10mm socket to remove the wiring harness on the back side of this Stock Intake. (Image 3)



Image 3

Step 5: Use a 10mm socket with extension to unbolt the stock intake tube secured by four bolts. (*Image 4*)

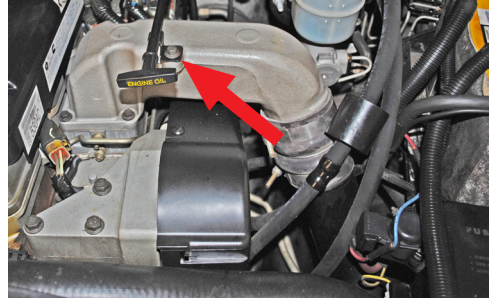


Image 4

Step 6: Use a 10mm socket to unbolt the three connections on the heater grid. Two of the connections are on the heater grid itself. The other one should be unbolted from the intake manifold. Remove the heater grid. (*Image 5 and 6*)

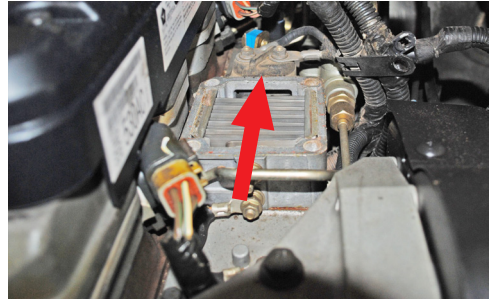


Image 5

Highly Recommended: Once the heater grid has been removed, stuff a clean rag into the opening on the intake manifold to keep debris from entering the intake.

Step 7: Using a gasket remover or razor blade, remove any remaining gasket material from the intake manifold and heater grid. (*Image 7*)

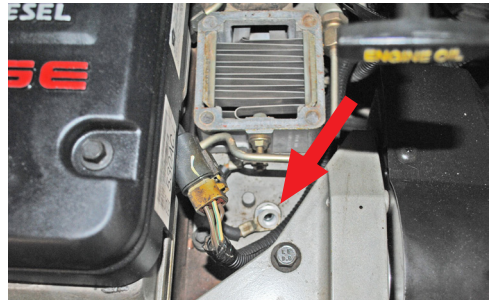


Image 6

Note: Remove the rag making sure no debris has fallen into the intake manifold.

Step 8: Place the new gasket on the intake manifold making sure it is orientated properly.

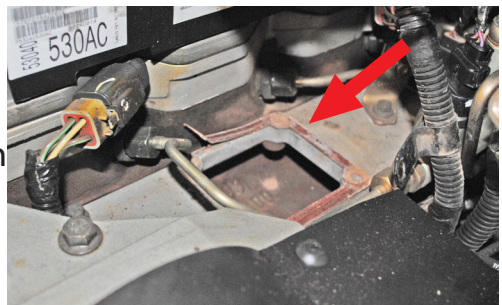


Image 7

Step 9: Replace the heater grid, and reconnect the wires that were disconnected in Step 6.

Step 10: Place the other gasket onto the Sinister Diesel Intake Elbow using two bolts to align the gasket.



Image 8

Step 11: Install the Sinister Intake Elbow by inserting the boot side in place first, then mount the flange to the intake manifold using the supplied allen head bolts. Tighten the hose clamp on the rubber boot. (Image 8)



Image 9

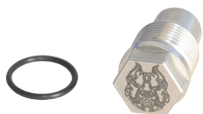
Note: Image 8 shows the intake elbow installed with our Sinister Diesel Heater Grid Delete. If you are only installing the intake elbow, the heater grid will be in place of it.

Step 12: Bolt the dipstick to the mount on the intake elbow with the supplied hardware. (Image 9)



CENTURION
SERIES EXHAUST

304 Stainless Steel • Tip Included • Available In 4" & 5"



Common Rail Fuel Race Valve



Steering Stabilizer



94-09 Dodge 2500/3500 Leveling Kit



Fuel Sump Kit



2025 Opportunity Dr. Suite
Roseville CA, 95678
877-692-4110 - SinisterDiesel.com