

SINISTER DIESEL



1999.5-2003

FORD 7.3L SUPERDUTY

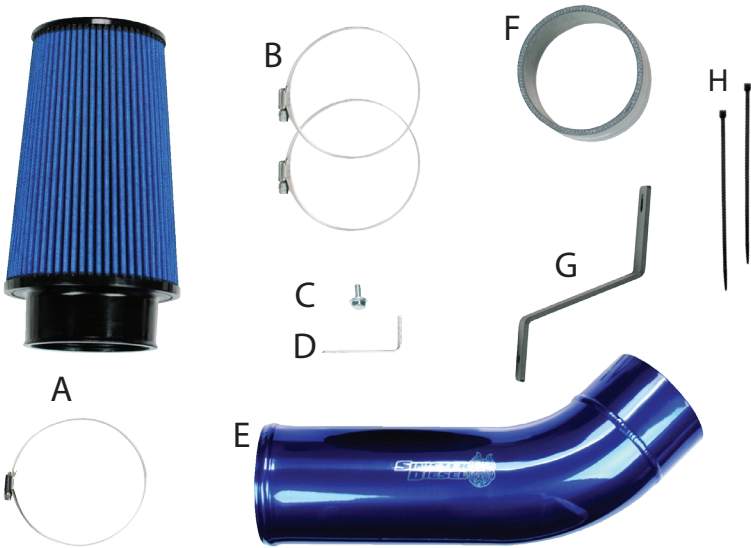
COLD AIR INTAKE



DISCLAIMER

- 1) By installing this product onto your vehicle, you assume all risk and liability associated with its use.
- 2) It is your responsibility to make sure your vehicle complies with all federal, state, and local emissions laws. Federal and many state and local laws prohibit the removal, modification or rendering inoperative of any part of the design affecting emissions or safety on motor vehicles used on a public street or highway. Violation may result in a fine of up to \$32,500 per vehicle (or possibly higher depending on changes in the law). All civil penalties and fines for removing your vehicle's emissions equipment are the sole responsibility of the end user.
- 3) Due to its high performance nature, this product may void vehicle manufacturer's warranty.
- 4) Sinister Mfg Company, Inc. is not responsible for misuse of its products. By installing this product, you release Sinister Mfg Company, Inc. of any and all liability associated with its use.
- 5) Depending on where you live, restrictions may apply. Check all applicable laws before installing or using!
- 6) The purchaser and end user releases, indemnifies, discharges and holds harmless Sinister Mfg Company, Inc. from any and all claims, damages, causes of action, injuries, or expenses resulting from or relating to the use or installation of this product that is in violation of the terms and conditions on this page, the product disclaimer, and/or the product installation instructions. Sinister Mfg Company, Inc. will not be liable for any direct, indirect, consequential, punitive, statutory, or incidental damages or fines caused by the use or installation of this product.

Ford 7.3L Cold Air Intake



PACKING LIST:

<u>Part#</u>	<u>QTY.</u>	<u>Description</u>
A	1	Intake Filter and Hose Clamp
B	2	Hose Clamps
C	1	M8 Flanged Head Hex Bolt
D	1	Temperature Sensor Bracket
E	1	Intake Tube
F	1	Silicone Boot
G	1	Intake Support Bracket
H	2	Zip Ties

Recommended Tools

8mm Socket, Extension and Ratchet
8mm and 13mm Combination Wrench
Flathead Screw Driver

Read all instructions prior to install.

Note: *Prior to installation, please compare the parts that you have received with the bill of materials provided on this page to assure that you have all the parts necessary for the installation.*



CAUTION!!! Never work on a hot vehicle. Serious injury in the form of burns can result if the vehicle has been in use. Allow vehicle to cool prior to installation. Always wear eye protection when working on or under any vehicle.

Note: For your safety we recommend disconnecting any negative battery terminals whenever working on any vehicle. Installation of the Sinister Diesel Cold Air Intake requires removal of the plumbing to the turbo intake. Use caution not to get any dust, debris, or tools left where they may enter the system.

Step 1: Disconnect the ground cable on both batteries. Also disconnect the positive cable on the driver side battery. (Image 1)



Image 1

Step 2: Remove the battery cover on the driver side battery. (Image 2)

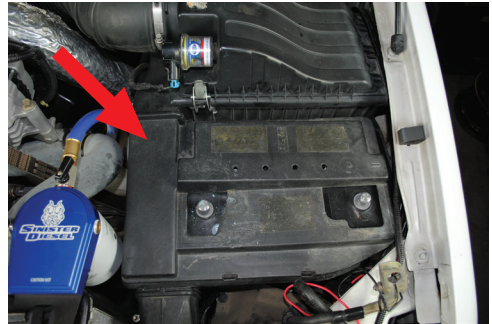


Image 2

Step 3: Disconnect the filter flow sensor wire if your vehicle is equipped with one. (Image 3)



Image 3

Step 4: Using an 8mm socket or flat head screwdriver, loosen the intake hose clamp in front of the crank case vent housing.
(Image 4)

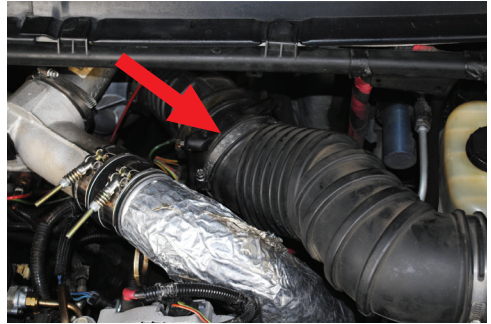


Image 4

Step 5: Release the two latches to remove the intake filter cover along with the first section of rubber tubing. (Image 5)

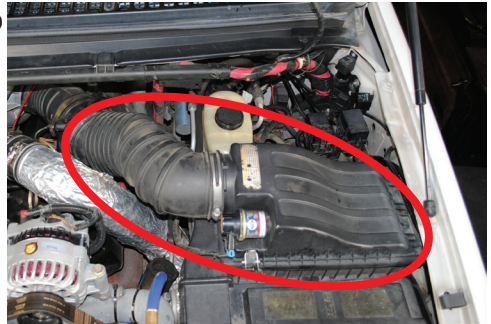


Image 5

Step 6: Remove the air filter.
(Image 6)

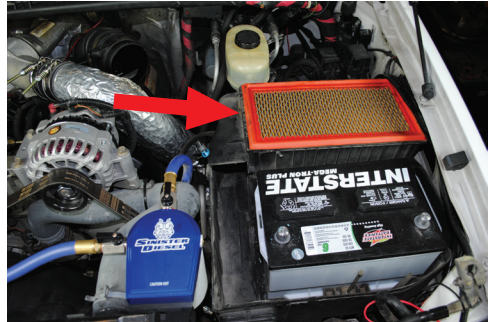


Image 6

Step 7: Remove the intake air temp sensor from the intake box.
(Image 7)

Note: It doesn't need to be unplugged however be careful not to damage the sensor.



Image 7

Step 8: Using an 8mm socket and extension, remove the four bolts and the lower half of the intake box. (Image 8)

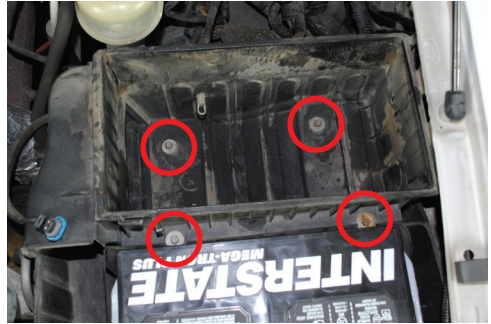


Image 8

Step 9: Using an 8mm socket and one of the factory intake box bolts, *loosely* install the intake support bracket and the intake air temp bracket as shown in image. (Image 9)

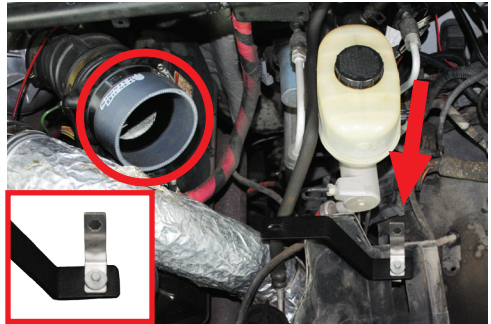


Image 9

Step 10: Using a nut driver or flat head screwdriver, install the grey silicone boot onto the PCV housing on the engine as circled in image 9. Tighten the hose clamp to secure it in place. (Image 9)

Step 11: Install the intake tube into the silicone boot and install the provided support bracket bolt hand tight. (Image 10)



Image 10

Note: Do not tighten the hose clamp on to the intake yet.

Step 12: Holding the intake tube off of the intercooler tube, tighten the support bracket with an 8mm socket to hold it in place. Make sure the intake is not touching the Intercooler tube indicated in image 11. (Image 11)



Image 11

Step 13: Using a 13mm socket or open end wrench, tighten the bolt securing the intake tube to the support bracket.



Image 12

Step 14: Using an 8mm socket or flat head screwdriver, tighten the hose clamp to secure the intake tube in the silicone boot.

(Image 12)

Step 15: Install the Intake air temp sensor into the bracket that was previously installed.

(Image 13)



Image 13

Step 16: Install the intake filter onto the end of the intake tube and secure it with the provided hose clamp. *(Image 14)*



Image 14

Step 17: Using the provided zip tie secure the filter flow sensor plug to other wiring so that it is safely out of the way.

Step 18: Reinstall the battery cover and reconnect both of the batteries.

Your Sinister Diesel Cold Air Intake installation is now complete!



2025 Opportunity Dr.
Roseville CA, 95678
877-692-4110 - SinisterDiesel.com