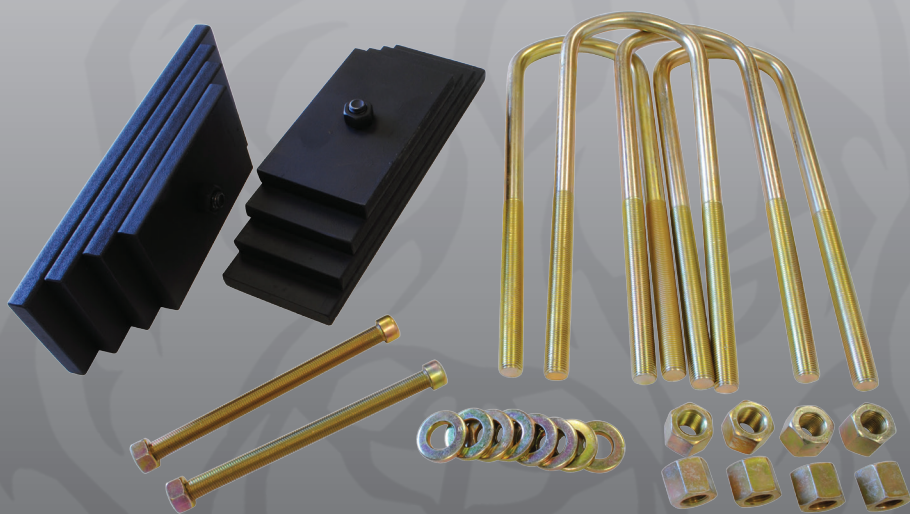


# SINISTER DIESEL



**1999-2004**

**FORD F-250/350/450/550**

**LEVELING KIT**



## DISCLAIMER

1) By installing this product onto your vehicle, you assume all risk and liability associated with its use.

2) It is your responsibility to make sure your vehicle complies with all federal, state, and local emissions laws. Federal and many state and local laws prohibit the removal, modification or rendering inoperative of any part of the design affecting emissions or safety on motor vehicles used on a public street or highway. Violation may result in a fine of up to \$32,500 per vehicle (or possibly higher depending on changes in the law). All civil penalties and fines for removing your vehicle's emissions equipment are the sole responsibility of the end user.

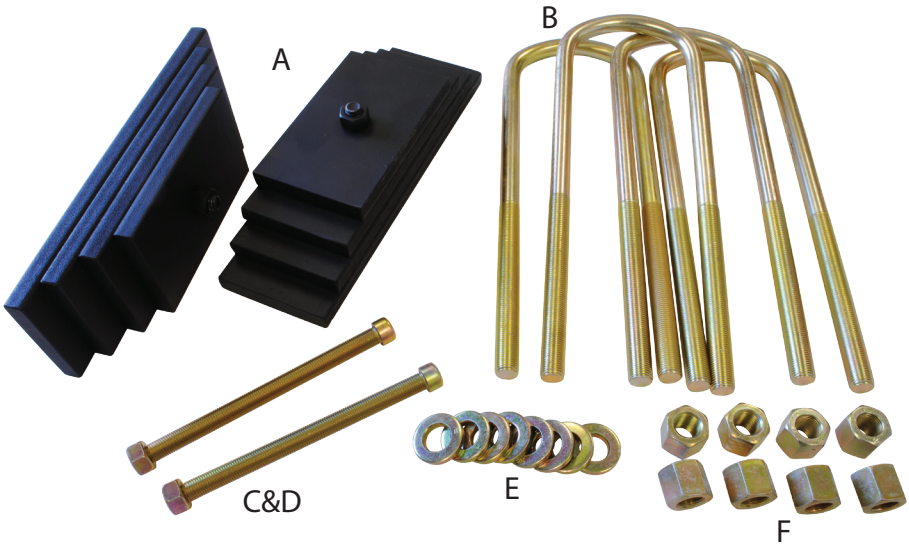
3) Due to its high performance nature, this product may void vehicle manufacturer's warranty.

4) Sinister Mfg Company, Inc. is not responsible for misuse of its products. By installing this product, you release Sinister Mfg Company, Inc. of any and all liability associated with its use.

5) Depending on where you live, restrictions may apply. Check all applicable laws before installing or using!

6) The purchaser and end user releases, indemnifies, discharges and holds harmless Sinister Mfg Company, Inc. from any and all claims, damages, causes of action, injuries, or expenses resulting from or relating to the use or installation of this product that is in violation of the terms and conditions on this page, the product disclaimer, and/or the product installation instructions. Sinister Mfg Company, Inc. will not be liable for any direct, indirect, consequential, exemplary, punitive, statutory, or incidental damages or fines caused by the use or installation of this product.

# Ford Leveling Kit



## PACKING LIST:

<u>Part#</u>	<u>QTY.</u>	<u>Description</u>
A	2	Leveling Blocks
B	4	9/16-18 U-Bolts
C	2	7/16-20 x 6" Center pins
D	2	7/16-20 Nuts
E	8	1/2" Washers
F	8	9/16-18 Nuts

Note: The bolt holding the leveling blocks together is only for shipping purposes.

***Read all instructions prior to install.***

**Note:** Prior to installation, please compare the parts that you have received with the bill of materials provided on this page to assure that you have all the parts necessary for the installation.



**CAUTION!!!** Never work on a hot vehicle. Serious injury in the form of burns can result if the vehicle has been in use. Allow vehicle to cool prior to installation. Always wear eye protection when working on or under any vehicle.

**Note:** With a used vehicle, we suggest spraying a penetrating lubricant on all hardware to be removed during installation. When doing so allow a significant amount of time for the chemical to lubricate the threads before attempting to disassemble. It is our recommendation that you use a hoist or hydraulic lift to facilitate the installation of your new Sinister Leveling Kit.

**TIP:** Install leveling blocks one side at a time for easier and safer installation.

**Step 1:** With truck on the ground, remove the driver side of the panhard bar bolt. (Image 1)



Image 1

**Step 2:** Unbolt the sway bar links. (Image 2)

**Step 3:** Jack the truck up just enough to unload the springs and support the vehicle with jack stands.



Image 2

**Step 4:** Unbolt the bottom of the shocks.

**Step 5:** Place a C-clamp on the spring pack that you will be installing the leveling block on. (Image 3)



Image 3

**Step 6:** Unbolt the U-bolts on the spring pack that you have clamped. (Image 4)

**Tip:** An impact wrench will make it much easier to remove and install nuts on the U-bolts.

**Step 7:** Remove the center bolt on the leaf spring. (Image 5)



Image 4

**Step 8:** Jack the truck up as high as the brake lines will safely allow. Reset the jack stands.

**Step 9:** Loosen the U-bolts on the other side. Do not remove them; however, loosen them until there is enough slack to install the blocks on the disassembled side.



Image 5

**Step 10:** Replace the shipping bolt on the leveling block with the provided center bolt. (Image 6)

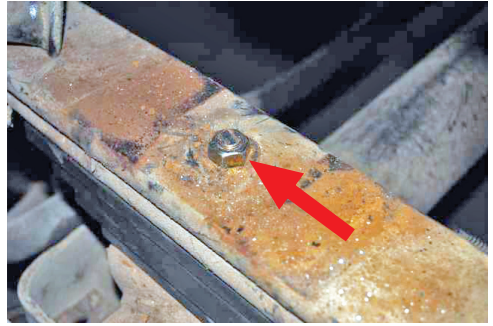


Image 6

**Note:** Refer to the packing list to see the shipping bolt on the leveling blocks.

**Step 11:** Push the disassembled side of the axle back and install the leveling block.

**Step 12:** Secure center bolt and cut off the excess threads.  
(Image 7)



*Image 7*

**Step 13:** Reinstall the axle and snug the U-bolts but do not tighten, then remove the C-clamp.

**Step 14:** Repeat steps 5-13 for the other side.

**Step 15:** Reinstall the shocks and lower the truck to the ground.

**Step 16:** Reinstall the sway bar and panhard bar.

**Step 17:** Finally Retighten the U-bolts to factory specifications.

**Step 18:** Test drive 25 miles and re-torque and check all bolts.

**Note:** The truck will have to be properly realigned. We recommend use of an adjustable track bar to properly adjust for alignment.



# SINISTER DIESEL



Sinister Cold Air Intakes



6.0L Sinister EGR Coolers



Sinister Charge Pipe Kits



**SINISTER PRODUCTS  
AND APPAREL**



2025 Opportunity Dr.  
Roseville CA, 95678

877-692-4110 - [SinisterDiesel.com](http://SinisterDiesel.com)