

INSTALLATION GUIDE:



**SINISTER  
DIESEL**

# Coolant Filter Kit

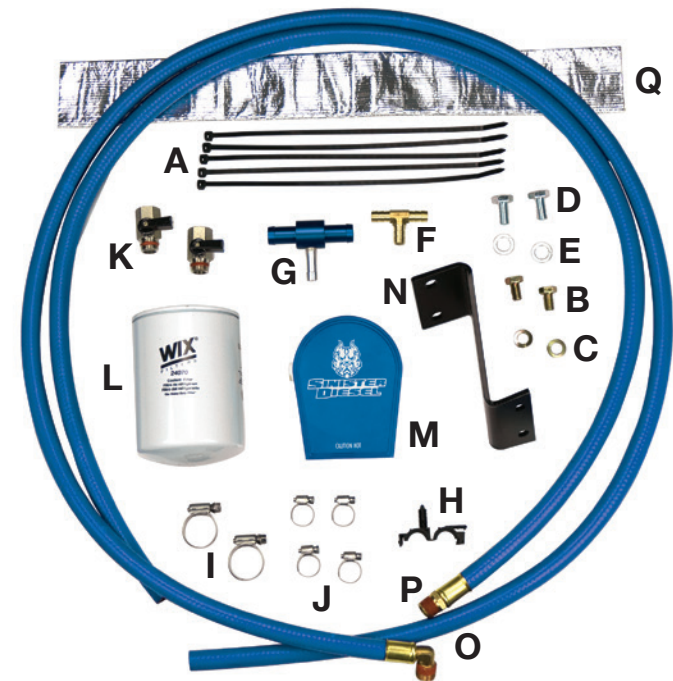
2011-2015.5 Chevy Duramax LML





# DISCLAIMER

- 1) By installing this product onto your vehicle, you assume all risk and liability associated with its use.
- 2) It is your responsibility to make sure your vehicle complies with all federal, state, and local emissions laws. Federal and many state and local laws prohibit the removal, modification or rendering in-operative of any part of the design affecting emissions or safety on motor vehicles used on a public street or highway. Violation may result in a fine of up to \$32,500 per vehicle (or possibly higher depending on changes in the law). All civil penalties and fines for removing your vehicle's emissions equipment are the sole responsibility of the end user.
- 3) Due to its high performance nature, this product may void vehicle manufacturer's warranty.
- 4) Sinister Mfg Company, Inc. is not responsible for misuse of its products. By installing this product, you release Sinister Mfg Company, Inc. of any and all liability associated with its use.
- 5) Depending on where you live, restrictions may apply. Check all applicable laws before installing or using!
- 6) The purchaser and end user releases, indemnifies, discharges and holds harmless Sinister Mfg Company, Inc. from any and all claims, damages, causes of action, injuries, or expenses resulting from or relating to the use or installation of this product that is in violation of the terms and conditions on this page, the product disclaimer, and/or the product installation instructions. Sinister Mfg Company, Inc. will not be liable for any direct, indirect, consequential, punitive, statutory, or incidental damages or fines caused by the use or installation of this product.



PART:	DESCRIPTION:	QTY:
A	11" Cable Ties	5
B	3/8"-16 x 5/8" Hex Head Bolts	2
C	3/8" Lock Washers	2
D	M10 -1.50 x 20 Hex Head Bolts	2
E	M10 Lock Washers	2
F	3/8"x3/8"x3/8" Barbed Tee	1
G	5/8"x5/8"x3/8" Blue Tee	1
H	Plastic Hose Clip	1
I	#10 Hose Clamps	2
J	#5 Hose Clamps	4
K	3/8" NPT Ball Valves	2
L	Wix 24070 Coolant Filter	1
M	Sinister Diesel Filter Block	1
N	Duramax Coolant Filter bracket	1
O	77" Sinister Diesel Coolant Hose with 90° Fitting	1
P	60" Sinister Diesel Coolant Hose with Straight Fitting	1
Q	22" Heat Wrap	1

**IMPORTANT: READ ALL INSTRUCTIONS PRIOR TO INSTALL.** Prior to installation, please compare the parts that you have received with the bill of materials provided on this page to assure that you have all the parts necessary for the installation.



**CAUTION !!!** Never work on a hot vehicle. Serious injury in the form of burns can result if the vehicle has been in use. Allow vehicle to cool prior to installation. Always wear eye protection when working on or under any vehicle.

**IMPORTANT:** Installation of the Sinister Diesel Coolant Filter Kit requires cutting of the coolant lines, resulting in coolant loss. Due to the coolant loss, we suggest draining and flushing the entire system at this time.

**1** Disconnect batteries.

**2** Drain approx. two gallons of coolant.

**3** Assemble the coolant filter block and mounting bracket using supplied 3/8" bolts and washers. (Image 1)

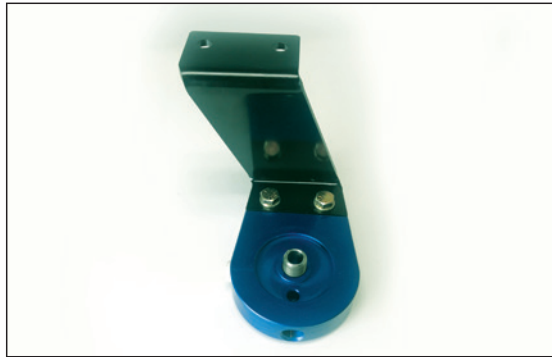


IMAGE 1

**4** Using a 13/16" or crescent wrench install the two supplied 1/4 turn ball valves onto the coolant filter block (thread sealing tape is not needed.)



IMAGE 2

**5** Install the coolant lines onto the ball valves. The 77" coolant line with the 90° fitting will thread into the ball valve on the right side of the coolant filter block. The 60" coolant line with the straight fitting will thread into the ball valve on the top of the coolant filter block. (Image 2)



IMAGE 3

**6** Lubricate the o-ring on the coolant filter with a petroleum based lubricant. Install the filter, hand tight, onto the filter block.

**7** Using supplied 10mm bolts and lock washers, install the mounting bracket assembly. Bracket mounts on the driver side of the air conditioning compressor. (Image 3)

**8** Route both coolant lines around the brake fluid reservoir and along the fire wall. Make sure to run lines through the supplied heat wrap. (Image 4)

**9** Using the 60" Sinister Diesel coolant hose with the 5/8" blue tee and hose clamps, splice into the heater hose that is routed from the EGR cooler to the firewall. (Image 5)

**10** Using the remaining 77" Sinister Diesel coolant hose with 3/8" brass tee and hose clamps, splice into the coolant return line on the top of the degas bottle (coolant reservoir). (Image 6)



IMAGE 4



IMAGE 5



IMAGE 6

**11** Using the supplied cable ties tie coolant hoses together and out of the way.

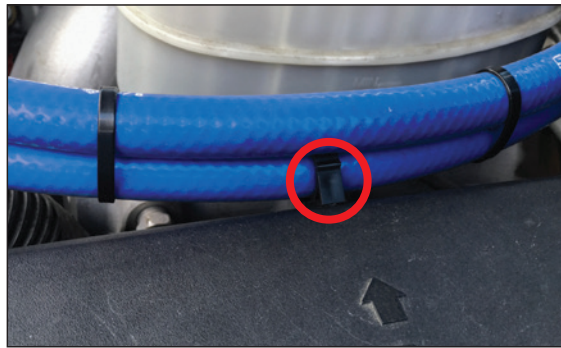


IMAGE 7

**12** Drill a hole in the fuse box cover and use supplied plastic hose clip to secure coolant lines next to the brake fluid reservoir. (Image 7)

**13** Refill the coolant system to factory specifications. Turn ball valves to the open position and check for leaks as the engine reaches operating temperature.

Installation of your Sinister Diesel Coolant Filter is now complete.

Visit [SINISTERDIESEL.COM](http://SINISTERDIESEL.COM) for the best deals on parts and kits for your truck.

# More Great Parts for your Duramax!



## INTAKE BRIDGES

Increase off the line torque and horse power. Mandrell bent 3 inch aluminum tubing optimizes airflow after the throttle valve and heater grid. **\$319**



## EXHAUST KITS

Gain horsepower, torque and rich, throaty sound with an aluminum or stainless Sinister Exhaust Kit. 4" and 5". **FROM \$465**



## SUMP TANK KIT

Perfect if you're having issues with your factory draw straw picking up fuel when the tank is low. **\$169**



## SOLUTION KITS

Fix all your major Duramax issues with these all-inclusive kits that save you time and money. **FROM \$599**



## EGR DELETE KIT

**FOR RACE USE ONLY!** This kit filters down to 2 microns saving vital engine components better than other systems. **\$129**



## Y-PIPES & UP PIPES

Top materials and manufacturing mean top performance from Sinister Y-Pipes & Up Pipes. Raw, ceramic and wrapped finishes. **FROM \$399**



## CAT FUEL FILTER ADAPTER

This kit filters down to 2 microns saving vital engine components better than other systems. **\$129**



## TRANSMISSION SUPPORT

Avoid vibrations, cracks and serious damage to your truck's transmission with our Sinister Transmission Housing Support. **\$149**

**SINISTER  
DIESEL**



**AMERICAN BORN & BRED**

**#1 IN PERFORMANCE PARTS & KITS**

2025 OPPORTUNITY DR. ROSEVILLE, CA 95678 SINISTERDIESEL.COM 877.692.4110