

INSTALLATION GUIDE:



**SINISTER
DIESEL**

Resonator Delete

2011–2016 6.6L Chevy LML







DISCLAIMER

1) By installing this product onto your vehicle, you assume all risk and liability associated with its use.

2) It is your responsibility to make sure your vehicle complies with all federal, state, and local emissions laws. Federal and many state and local laws prohibit the removal, modification or rendering in-operative of any part of the design affecting emissions or safety on motor vehicles used on a public street or highway. Violation may result in a fine of up to \$32,500 per vehicle (or possibly higher depending on changes in the law). All civil penalties and fines for removing your vehicle's emissions equipment are the sole responsibility of the end user.

3) Due to its high performance nature, this product may void vehicle manufacturer's warranty.

4) Sinister Mfg Company, Inc. is not responsible for misuse of its products. By installing this product, you release Sinister Mfg Company, Inc. of any and all liability associated with its use.

5) Depending on where you live, restrictions may apply. Check all applicable laws before installing or using!

6) The purchaser and end user releases, indemnifies, discharges and holds harmless Sinister Mfg Company, Inc. from any and all claims, damages, causes of action, injuries, or expenses resulting from or relating to the use or installation of this product that is in violation of the terms and conditions on this page, the product disclaimer, and/or the product installation instructions. Sinister Mfg Company, Inc. will not be liable for any direct, indirect, consequential, punitive, statutory, or incidental damages or fines caused by the use or installation of this product.



PART:	DESCRIPTION:	QTY:
A	Sinister Resonator Delete Block	1
B	M6 Allen Head Bolts	2

IMPORTANT: READ ALL INSTRUCTIONS PRIOR TO INSTALL. Prior to installation, please compare the parts that you have received with the bill of materials provided on this page to assure that you have all the parts necessary for the installation.



CAUTION !!! Never work on a hot vehicle. Serious injury in the form of burns can result if the vehicle has been in use. Allow vehicle to cool prior to installation. Always wear eye protection when working on or under any vehicle.

IMPORTANT: For your safety we recommend disconnecting any negative battery terminals whenever working on any vehicle. Use caution not to get any dust, debris, or leave tools where they may enter the system.

- 1 Using a 10mm socket, remove the stock intake resonator box by removing the two bolts. One bolt is located behind the resonator box by the fire wall. (Image 1)

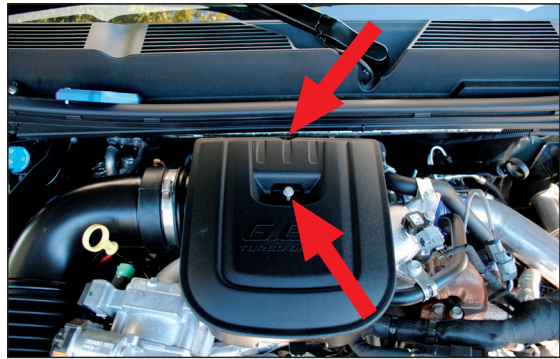


IMAGE 1

- 2 Using a 5mm allen wrench, install the Sinister Resonator Delete Block in place of the stock resonator box. (Image 2)

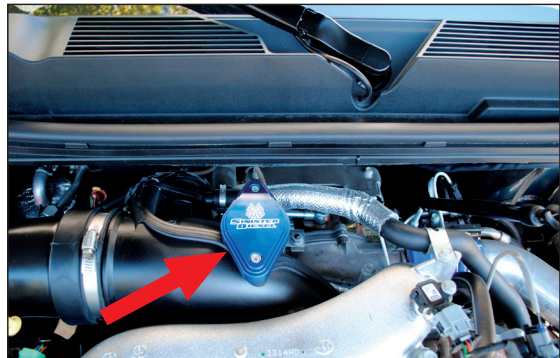


IMAGE 2

More Great Parts for your Duramax!



INTAKE BRIDGES

Increase off the line torque and horse power. Mandrell bent 3 inch aluminum tubing optimizes airflow after the throttle valve and heater grid. **\$319**



EXHAUST KITS

Gain horsepower, torque and rich, throaty sound with an aluminum or stainless Sinister Exhaust Kit. 4" and 5". **FROM \$465**



SUMP TANK KIT

Perfect if you're having issues with your factory draw straw picking up fuel when the tank is low. **\$169**



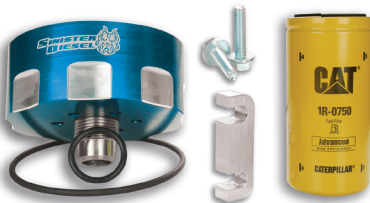
SOLUTION KITS

Fix all your major Duramax issues with these all-inclusive kits that save you time and money. **FROM \$599**



Y-PIPES & UP PIPES

Top materials and manufacturing mean top performance from Sinister Y-Pipes & Up Pipes. Raw, ceramic and wrapped finishes. **FROM \$399**



CAT FUEL FILTER ADAPTER

This kit filters down to 2 microns saving vital engine components better than other systems. **\$129**



TRANSMISSION SUPPORT

Avoid vibrations, cracks and serious damage to your truck's transmission with our Sinister Transmission Housing Support. **\$149**



SD-RSNTD-LML-2018



#1 IN PERFORMANCE PARTS & KITS

2025 OPPORTUNITY DR. ROSEVILLE, CA 95678 SINISTERDIESEL.COM 877.692.4110